

IP Kamera 9070

User Manual



Release Date: 10/05/2009
Manual Version: 1.2

Warning: Any changes made to this equipment without permission may cause damages to the device!

IMPORTANT NOTICE

1. IP Kamera 9070 was designed for indoor use, it is the responsibility of the user for any possible damages caused by outdoor use, especially in the rain.
2. Please use the power adapter provided by the dealer, the manufacturer responsibility for the possible damage from using power adapters not .
3. Do not shake the IP Kamera 9070 in any fashion
4. Please contact the dealer If IP Kamera 9070 is not working properly.

Copyright © 2009 All rights reserved. No part of this publication may be reproduced, stored in a retrieval system, or transmitted in any form or by any means, electronic, mechanical, photocopying, recording or otherwise, without the prior written consent of us.
All trademarks and products mentioned in this document are the properties of us.

Table of Content

<u>1.) WELCOME.....</u>	5
INTRODUCTION.....	5
MINIMUM SYSTEM REQUIREMENTS	5
<u>2.) PRODUCT OVERVIEW.....</u>	6
FEATURES.....	6
SPECIFICATION	6
<u>3.) INTERFACE DESCRIPTION</u>	8
REAR PANEL VIEW	8
<u>4.) HARDWARE SETUP.....</u>	9
INTERNET ACCESSIBLE SETUP	9
CONNECTING THE DEVICE	10
<u>5.) SOFTWARE SETUP.....</u>	10
SOFTWARE FOR IP KAMERA 9070	10
INSTALLING VLC CODEC	12
USING IP EDIT.....	12
QUICK EASY SETUP (RECOMMENDED)	13
CUSTOM SETUP (ADVANCE USERS).....	14
IP SERVICE	15
<u>6.) WEB INTERFACE.....</u>	17
CONNECTING TO THE 9070	17
THE CONTROL CONSOLE	19
LIVE VIDEO	20
TYPE AND ZOOM.....	20
MOTION DETECTION	22
ACTIVE RECORD	22
RECORD	22
SNAPSHOT	23
IMAGE.....	24
IMAGE SETTINGS.....	24

TUNE IMAGE	26
NETWORK	27
NETWORK.....	27
FTP	27
SMTP (OUTGOING E-MAIL SERVER)	28
SNTP	28
IP SERVICE	29
SYSTEM	29
DATE AND TIME.....	29
TIME STAMP	30
USER	30
LIGHT.....	31
LANGUAGE.....	32
UPDATE.....	32
EVENT LOG	34
APPLICATION	35
SETTING	35
SCHEDULE RECORD	42
ALARM.....	42
EPTZ-SET.....	44
<u>7.) CONTROLLING THE DEVICE.....</u>	<u>45</u>
CGI HTTP COMMANDS	45
SNAPSHOT COMMAND:	45
CHANGE NAME:	46
CHANGE IP ADDRESS:.....	46
CHANGE PORT:.....	46
CHANGE SUBNET MASK:	46
CHANGE GATEWAY:	46
CHANGE DNS:	46
MJPEG STREAMING.....	47
<u>8.) USING RTSP WITH VLC</u>	<u>47</u>
<u>9.) USING CNT WITH SURF16 CH</u>	<u>50</u>
FINDING THE MAC ADDRESS.....	50
ADD DEVICE USING CNT	50
<u>10.) FREQUENTLY ASKED QUESTIONS (F.A.Q).....</u>	<u>51</u>

1.) Welcome



Introduction

The IP Kamera 9070 provides reliable, high quality solution to IP Kameras. Its distinctive 720P HD quality picture, Tri-mode video capability, RTSP broadcasting capability, wide angle lens, built in 2GB microSD memory, and much more functions makes this small device very powerful and unique. Also with innovative features like My Web and EZ blog technology the 9070 can take your IP Kamera and make it a wonderful promotional tool, blogging camera.

Using innovative IP technology, the built in web server of the IP Kamera 9070 will allow you to view your IP Kamera from any remote locations around the world while bringing you world class surveillance and ease of mind. Furthermore, with CNT technology the 9070 is easy to setup & use, simply just plug and play.



Minimum System Requirements

CPU Minimum Requirements

- Intel(R), Pentium(R), DUAL Core (D), CPU 3.0GHz or equivalent
- Operating Systems: WINDOWS Operating Systems (IE5.0+SPI)
- 512 MB system memory or above
- Video Card: 3D hardware accelerator card required – 100% DirectX 9.0c compatible
- 10/100 Ethernet switch/hub
- Sound Card: DirectX 9.0c compatible sound card
- Ethernet network port/card
- Network cable
- Internet (For remote access) or Ethernet Network (Internal Network use) with some type of Internet connection, (i.e. ADSL, Cable, Dial up or any other forms of Internet service)

Software

- VLC media player 0.8.6b or above.
- Windows XP Service Pack 2 or above.
- Resolution of screen setting: 1280x960 or higher for the display of 720P

2.) Product Overview

Features

1. Tri-Mode Camera (MPG4-1/MPEG4-2/M-Jpeg)
2. Advance Motion detection trigger AVI /Jpeg save on FTP / SD card or Email
3. 3 layers (Admin, Operator, and User) Password protected
4. Resolution from CIF 352x192 up to **HD 1280x720P**
5. Supports NTP protocol to get correct time schedule.
6. 1/2.5" Advance CMOS sensor, with highly sensibility for quick response insufficient lighting.
7. Supports HTTP CGI command set. Easy for system integration
8. IP Service Search utility, to find your IP Kamera on internet with ease
9. Watchdog / Event log design
10. Adjustable frame-rate, bit-rate, rate-control type, quality factor for best image quality and speed.
11. Supports date and time marking on the captured video, and also inserted streamed data.
12. Measured End-to-End latency is less than 150ms
13. Supports adjustable backlight, brightness, contrast, saturation & sharpness
14. TV Output capabilities
15. Built in LED Spotlight
16. Automatic alarm recording buffer
17. CNT Technology – Just Plug and Play no need to port forward
18. EPTZ – Electronic Pan, Tilt, and Zoom
19. Scheduler recording capabilities e
20. Email Capabilities
21. Alarm Recording Buffer
22. EZ Blog and My Web Technology
23. Automatic Tune up functionality
24. Built In 2GB Embedded microSD memory
25. Supports: HTTP Web Server (HTTP), SSL, FTP client, SMTP client, NTP client, DHCP client, UPnP client, RTSP over UDP, RTP

Specification

Casing: Lightweight plastic

Case Color: Black

Weight: 105 Grams (0.231 Lbs)

Dimensions (W x L x H): 108 X 58 X 28mm

Operating Conditions: 5 – 50 °C (41 – 122 °F)




Humidity 20 – 80% RH

(non-condensing)

Power: AC Adaptor

Input: 100-240V~0.3A MAX 10-20VA, 50-60Hz

Output: +5V 1.0A Max 5W

Package Contents	
1.) 9070 Unit x 1	
2.) 9070 Installation CD	
3.) AC Adaptor	<p>(One AC adaptor will be included and will correspond to the countries power standards)</p> <p>Specs: Input: 100-250Vac /47-63Hz, 1A Output: 5Vdc/1A</p>
4.) Camera Mounting Bracket	
5.) RJ45 Cable x 1 (Optional)	

3.) Interface Description

Rear Panel View

Rear View



Device Reset:	Reset to Manufacturer Default: Hold Reset button for 5-10 Seconds and the device will reset to manufacturer default
Video Out:	The Video out requires a RCA connector to output video to a different source.
RJ45 Ethernet:	Plug in the RJ45 Ethernet cable to the Ethernet port
DC 5 V Power Input:	Plug in the Power Adapter to the DC 5V

4.) Hardware Setup

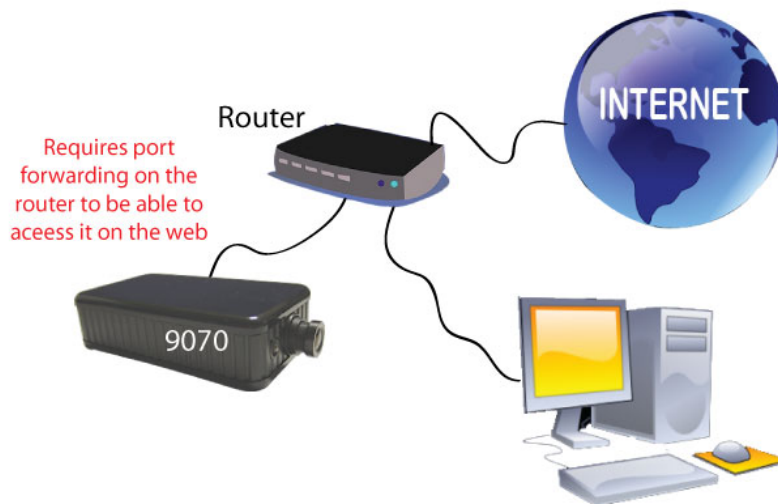
*Before setup the device make sure of the following:

- 1.) Make sure that all the package contents are all included if anything is missing please contact the store or your distributor.
- 2.) Make sure the power adaptor is the correct specification.
- 3.) Make sure that all the cables are working correctly

Internet Accessible Setup

The internet connection can be setup in two main ways so that the 9070 can be accessed through the internet

- a.) **My network uses a Router/Firewall to connect each device to the internet**



In this case, the 9070 will need to be port forwarded on the router so that it can be accessed by the internet.

For example

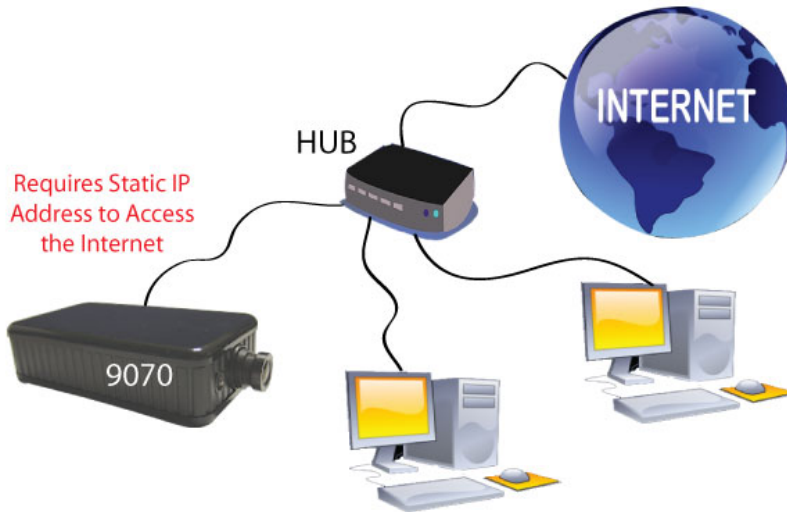
9070 IP Address: 192.168.1.882

9070 Port: 9070

On the router that is being used port forwarded (port triggered) IP Address 192.168.1.882 and port 9070. For this section you may be required to refer the user manual for the router due to the fact that each router has a different way of setting up the device.

Note: Please refer to page: 43 on how to use CNT (Cross Network Technology). With CNT no port forwarding is required to view the camera. But for normal functionality please use the web browser to view the camera.

- b.) **My internet uses a static IP Address provided by the ISP.**



In this case, the 9070 is being connected to the internet through a hub, which is different from a router. The hub does not provide DHCP, and therefore would require that this setup have a static IP Address that is provided by the ISP.

Contact the ISP to find out the static IP address so that your device can be accessed through the internet. Once a Static IP has been assigned the device will be able to automatically go onto the internet. .

Connecting the Device

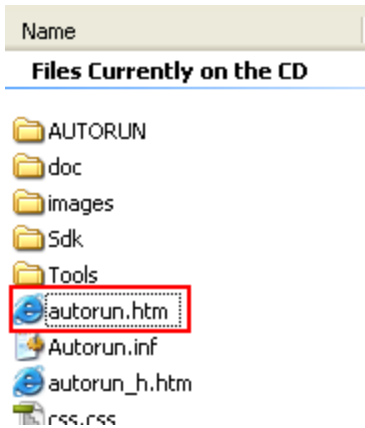
- 1.) Connect the IP Kamera 9070 to a HUB or Router with a RJ45 network cable.
- 2.) Connect the HUB or Router to the internet (May through ADSL/XDSL modem).
- 3.) Connect the power adapter to the DC 5V port of IP Kamera 9070.

5.) Software Setup

The software for the device is located on the **Media Link-IP Family CD** that came with the device. IP Kamera Pack is located on the main page of the CD. Please follow the directions carefully and install the necessary files

Software for IP Kamera 9070

- 1.) First place the **Media Link-IP Family CD** that came with your device into your CD/DVD Rom drive. The CD should auto run but if it does not go to the CD/DVD Rom drive and select the file "**autorun.html**".



2.) Select the IP Kamera section and pick the IP Kamera and Model that you are using.



3.) Download the following software and save them to the appropriate locations.

- a. **IPEdit** - Device search tool which allows you to modify IP settings, find your on the local network and IP Service.
- b. **Surf 16 CH** – 16 Channel DVR, Monitoring, & Recording Software. Views up to 16 channels on one screen.

4.) Once installation is complete please double click the **IPEdit** to configure and search for your device.

Installing VLC Codec

The files that are recorded by the 9070 requires this codec so that you are able to view the view. Download the latest version of the VLC codec and install it into your computer. You can find the latest version of the codec from here <http://www.videolan.org/>

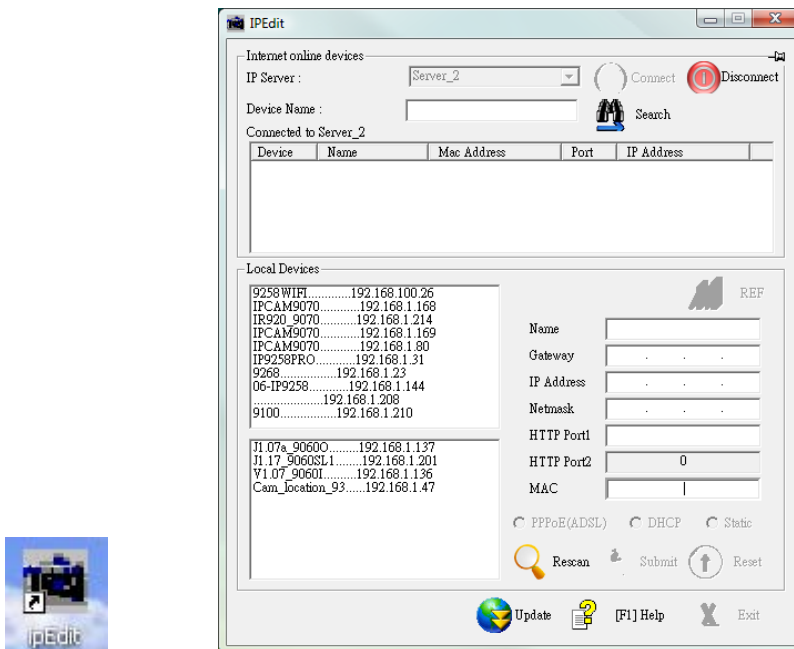
Using IP Edit

IPedit is a search tool designed to setup and access the IP Kamera 9070. IP Service is an additional feature which searches for the device easily without having to remember long complicated IP addresses. Instead, this technology allows the user find his or her device through the internet just by device name.

Note: Please allow the IP Kamera 9070 1 to load before using IPedit.

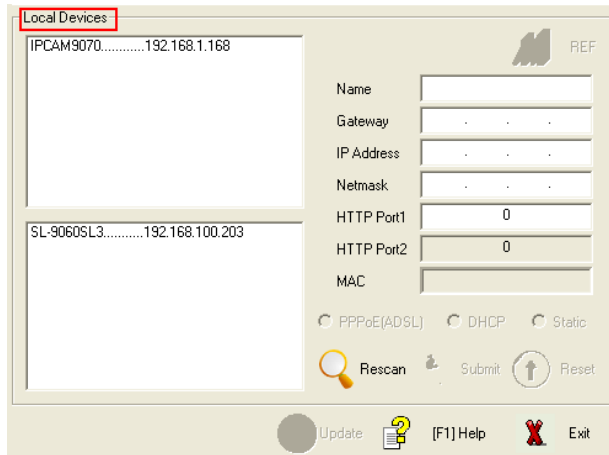
Default IP: 192.168.1.168 (When 9070 is connected to PC directly)
Default Login: Admin
Default Password: 12345678

- 1.) Double click on the IPedit icon to run the program.



- 2.) Open IPedit and any device in the same network should automatically be detected and listed in the **local devices** sections.


Note: If the device is not showing up, please hit the rescan button and wait about 1 minute

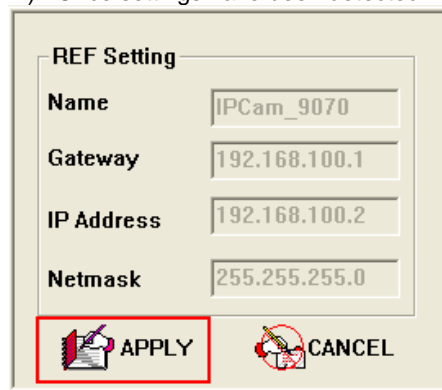


Setup the Device:

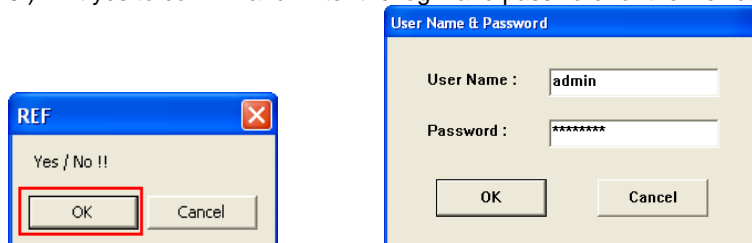
All devices will need to be on the same network if not the device cannot be accessed and will not be detected.

Quick Easy Setup (Recommended)

- 1.) Click on the REF button,  and wait a few seconds. IPEdit will automatically detect the network settings and setup the device.
- 2.) Once settings have been detected hit the apply button to apply the new settings.



- 3.) Hit yes to confirm and Enter the login and password for the Device to Approve changes




- 4.) Then hit the rescan button on IPEdit to confirm the changes have been made.

REF	
Name	IPCam_9070
Gateway	192 . 168 . 100 . 1
IP Address	192 . 168 . 100 . 2
Netmask	255 . 255 . 255 . 0
HTTP Port1	80
HTTP Port2	0
MAC	00:90:70:66:66:66

Custom Setup (Advance Users)

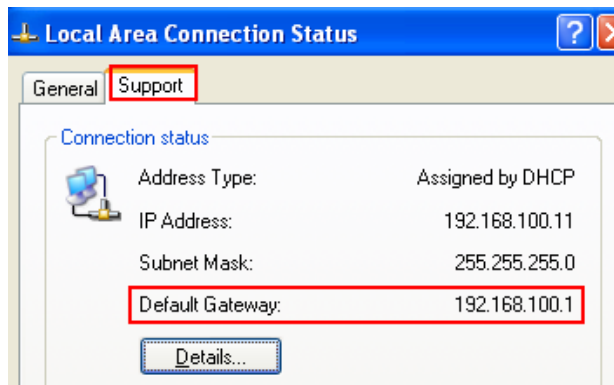
- 1.) Highlight the device on the local devices section and on the right side of IPEdit all network information on the device will be displayed.

If the device is not on the same network a Red Exclamation mark  will appear in the IP Network information section

Input Ref Button REF	
Name	IPCam_9070
Gateway	192 . 178 . 100 . 1
IP Address	192 . 178 . 100 . 2 
Netmask	255 . 255 . 255 . 0
HTTP Port1	80
HTTP Port2	0
MAC	00:90:70:66:66:66
<input type="radio"/> PPPoE(ADSL) <input type="radio"/> DHCP <input checked="" type="radio"/> Static	

- 2.) To setup the device, you will need type in the correct **Gateway** and **IP Address**.

The Gateway Address: The gateway address can be obtained in Windows under the network connections page



Local Area Connection Status

General Support

Connection status

Address Type: Assigned by DHCP

IP Address: 192.168.100.11

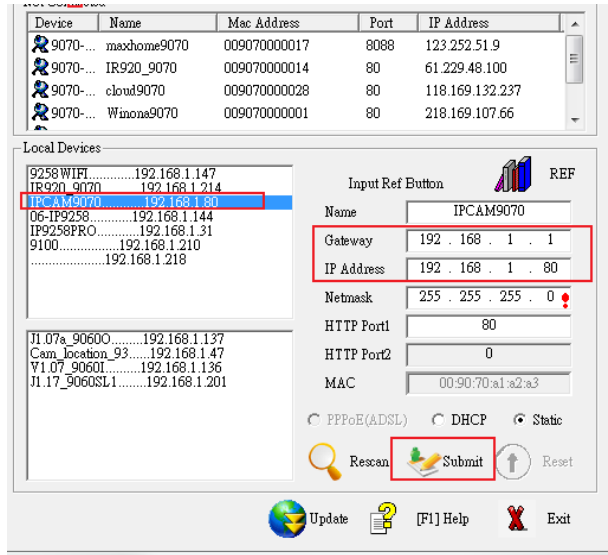
Subnet Mask: 255.255.255.0

Default Gateway: 192.168.100.1

Details...

IP Address: Make sure the first 3 sections of the IP Address matches the gateway address.
Example: Gateway Address – 192.168.1.1 IP Address – 192.168.1.xxx

- 3.) Once the Default Gateway information has been obtained, enter the correct information into IPEdit and hit the submit button.



4.) Then hit the rescan button on IPEdit to confirm the changes have been made.

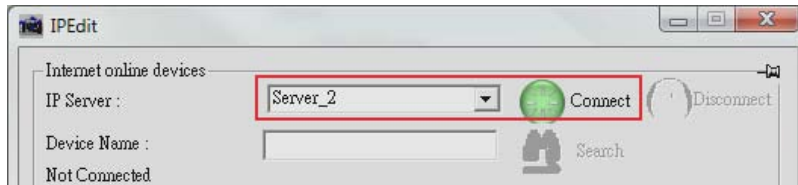
IP Service

How to use IP Service on IPEdit:

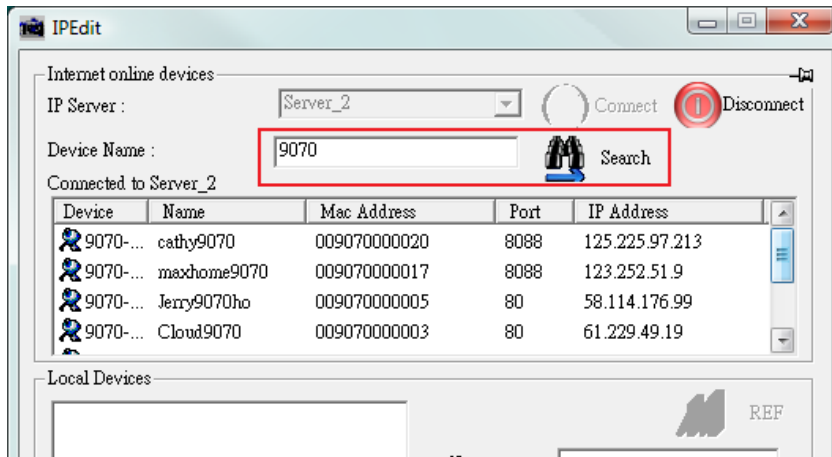
IP service allows the user to directly connect to his / her device through the internet without having to remember long confusing IP Address. Instead you only need to remember the name of the device that the you have selected. Then the user can connect to IP Service, type in the device name, and connect directly to the device.

Note: The IP Kamera 9070 requires you to select Server 2 on IP Service

- 1.) Open IPEdit, the device will show up in the Local Device Section. If you have not selected a name for the device, please refer to the section on the manual labeled: "Naming your device".
- 2.) To start IP Service, **Hit the green connect button on the top of IPEdit.**



- 3.) Once you have been connected search for your device by typing in at least the first 3 letters that you named your device with. Then hit the search button.



4.) Double click on your device and an Internet Explorer window will appear connecting directly to your device.

Note: It is crucial to have the IP Address of the device port forwarded from the router that you are using so you can connect to your device from anywhere. Please refer to your routers user manual on how to port forward your device.

6.) Web Interface

Connecting to the 9070

Once the 9070 has been setup correctly and access your IP Kamera 9070. An Internet Explorer browser screen pop up with the login screen.

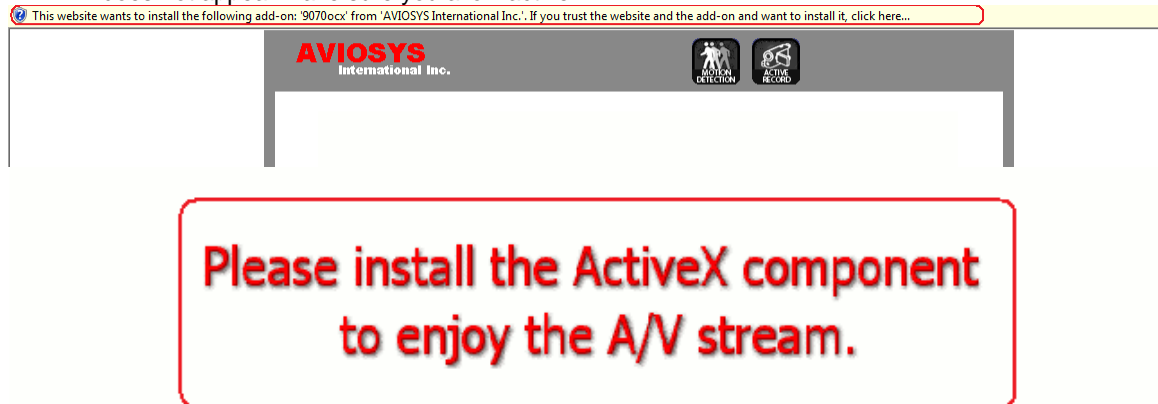


Default IP: 192.168.1.168 (When 9070 is connected to PC directly)

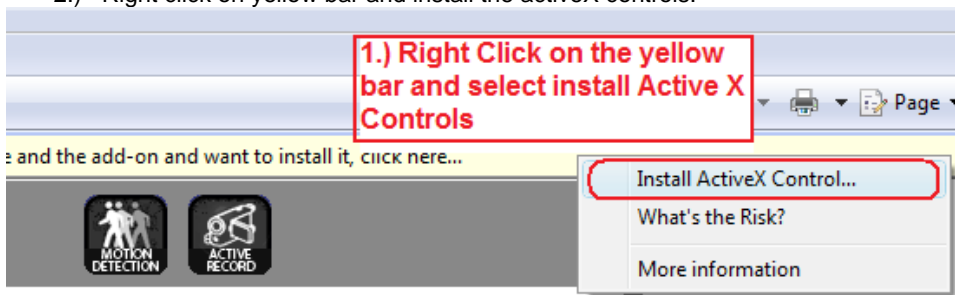
Default Login: Admin

Default Password: 12345678

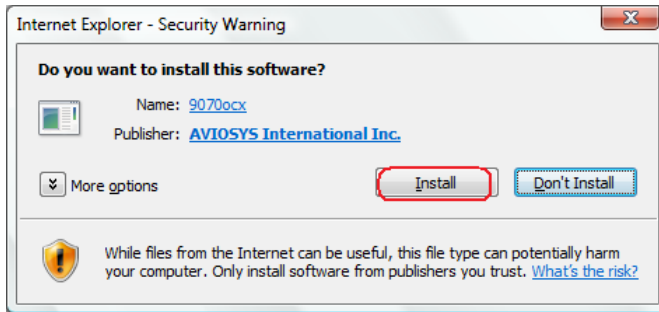
- 1.) After you have logged into the device you will be required to install active x controls. If this screen does not appear make sure you allow active x.



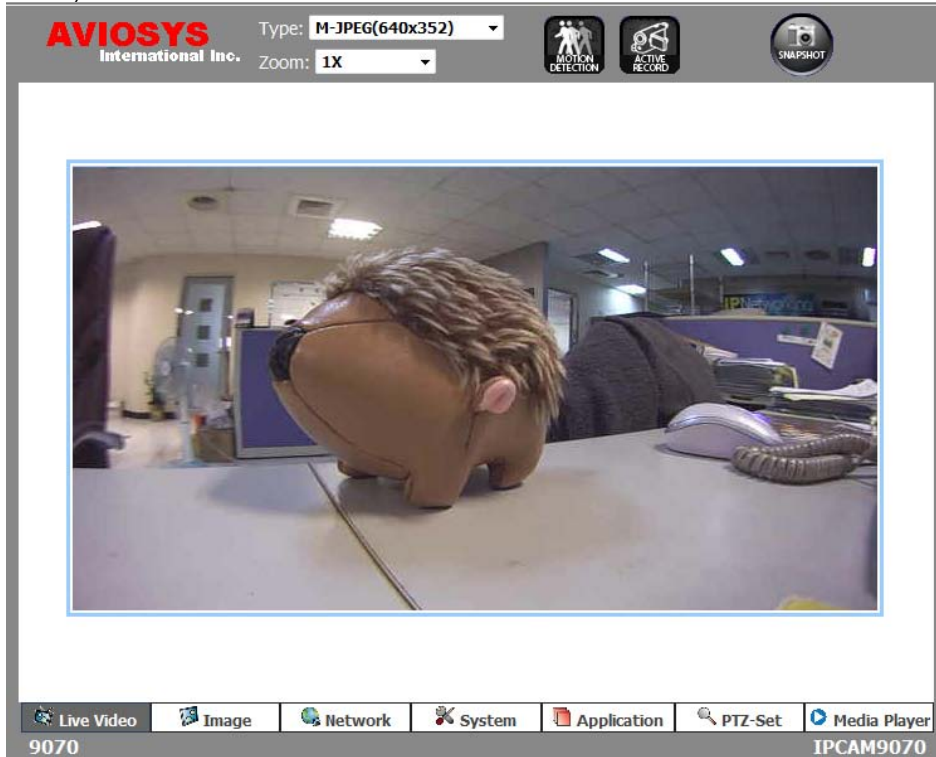
- 2.) Right click on yellow bar and install the activeX controls.



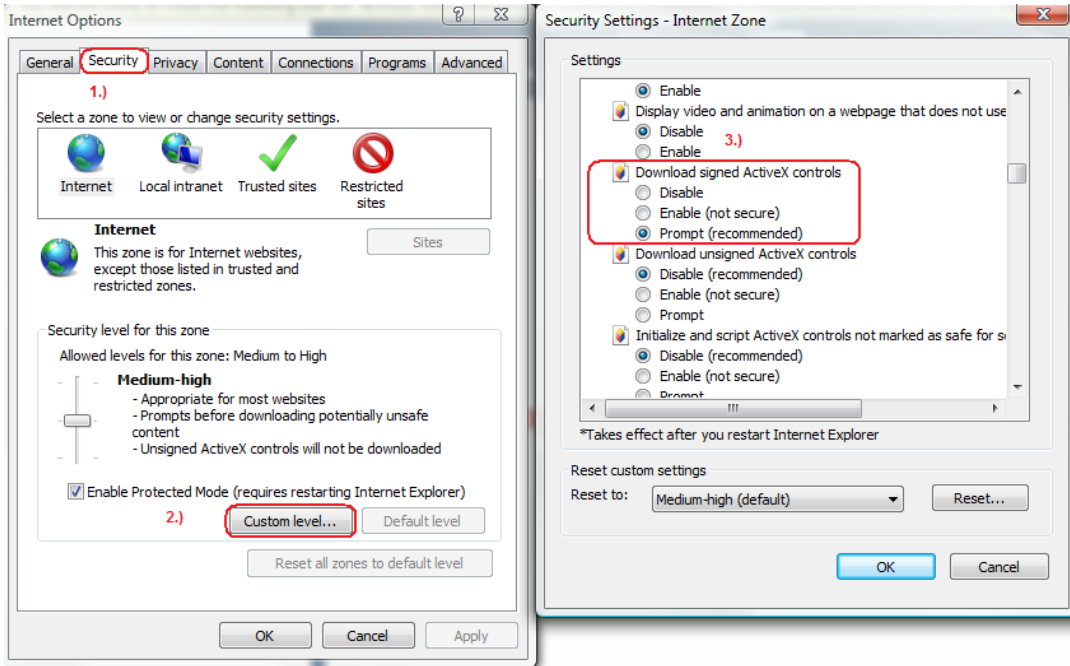
3.) Then click the install button and install the active controls.



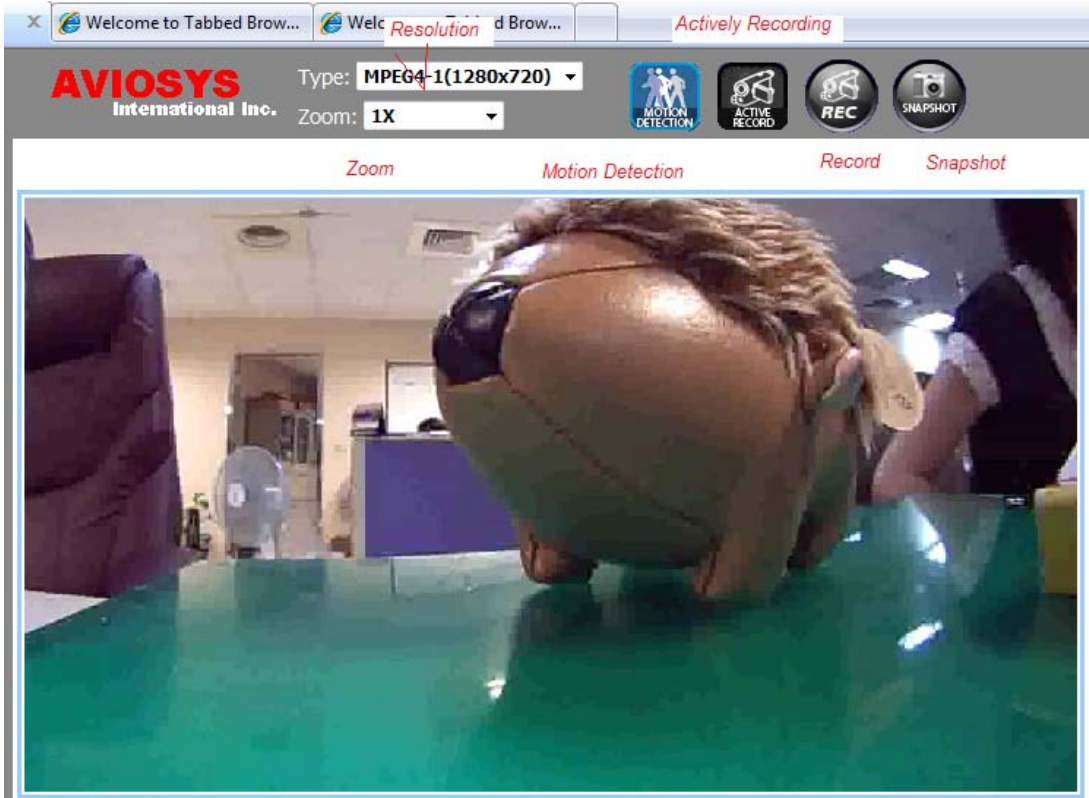
4.) Once activeX controls have been installed the video feed will show on the screen



Note: If there is no active x controls that are showing up, please go to internet explorer and enable activeX controls.



The Control Console



The IP Kamera 9070 Control Console starts in the [Live Video](#) Section of the webpage. In this section navigate to the other options and settings of the 9070



Live Video: The Live Video section allows the user to view the camera, change resolution views,



Image: The Image section allows you to edit the image settings, including recording / viewing codec, frame rate, image tuning, brightness, contrast, saturation, and etc.



Network: The network section allows you to change the devices network settings, ftp settings, smtp (email) settings, snmp settings, and IP service settings.



System: The system section allows you to change the devices date and time, set time stamp for video, users, audio settings, update, event log.



Application: The application section allows you to change the video recording format, ftp storage settings, SD Card settings,



EPTZ-Set: The EPTZ allows you to zoom into the cameras image using digital zoom with pan & tilt.



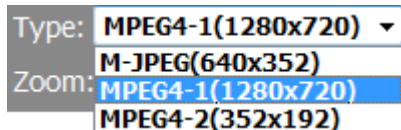
Media Player: The Media player can directly access the files in the built in memory. Each video file & picture can be accessed here and streamed through the internet.

Live Video

The Live video section of the IP Kamera 9070 is where you will live view the video of the device. From here you can change resolution, record onto current pc, take a snapshot, zoom, and detect motion detection.

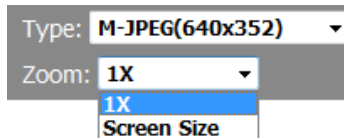
Type and Zoom

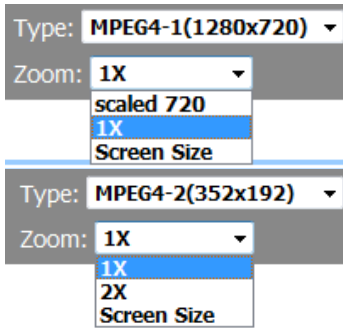
Type: The type function allows you to set the streaming format for the IP Kamera 9070. You can select from the following type of resolutions depending on the format type you have set in the image settings.



M-JPEG (640x 352)
MPEG4-1 (1280x720)
MPEG4-2 (352x192)

Zoom: The zoom function allows you to select the screen size of the stream. Depending on the type that you have selected there will be different zooms that will be available.





1X zoom: The 1X zoom is the normal view for each type.

2X zoom: This 2X zoom is 2 times the normal view for that type.

Scaled 720: Is a resolution only available in MPEG-4-1, which sets the picture at 720P.

Screen Size: Will enlarge the image to the who size of the screen. This function is very useful when trying to display on larger monitors.

Mouse EPTZ


Mouse EPTZ



Mouse PTZ Controls

Zoom Out: Hold Right Mouse, Zoom In: Hold Left Mouse,
Quick Zoom Out: 2 x Right Mouse, Quick Zoom In: 2 x Left Mouse

On the live video screen move the mouse cursor to the video and click left or right click to use the Mouse EPTZ functionality. Here you can easily **Zoom in**, **Zoom Out**, **Quick Zoom**, **Quick Zoom Out**.

The instructions will be displayed on the screen when the mouse if moved over the  icon.



Mouse PTZ Controls

Zoom Out: Hold Right Mouse, Zoom In: Hold Left Mouse,
Quick Zoom Out: 2 x Right Mouse, Quick Zoom In: 2 x Left Mouse

To Zoom In: To Zoom into the picture move the mouse cursor over the picture and click and hold the left mouse.

To Zoom Out: To Zoom out of the picture move the mouse cursor over the picture and click and hold the right mouse.

Quick Zoom In: Quick zoom in is used to quickly zoom into the maximum zoom of the picture. To use this function on the picture double click the left mouse.

Quick Zoom Out: Quick zoom out is used to quickly zoom into the maximum zoom of the picture. To use this function on the picture double click the right mouse.

Motion Detection

Motion Detection: The motion detection icon will display when motion has been detected. This setting must be activated in the application section



No Motion Detected



Motion Detected

Active Record

Active Record: Active record will show up when the device is actively recording. Active recording functions like motion detection, scheduler, or an alarm will set off this automatic recording.

Automatic Recording Inactivated



Automatic Recording Activated



Record

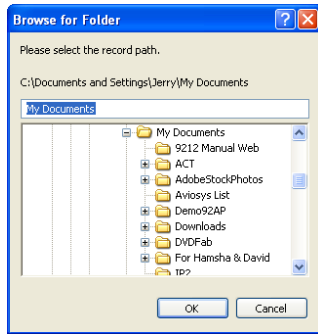
Record: The record button on the 9070 when pressed will record the live video feed and save the video into the computer viewing.

To record follow the following steps:

- 1.) Click on the record button



- 2.) Then select the folder that you would like to store the file. Then hit okay.



3.) Once the folder has been selected the device will start to record.



To stop recording click on the red icon and it will return to the original state.

Note: Remember the VLC codec is required to play the video files that are recorded

Snapshot

Snapshot: The snapshot function, creates a easy way take pictures of the current view in the IP Kamera 9070.



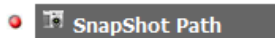
To setup the snapshot destination folder:

- 1.) Click on the Application link on the bottom menu



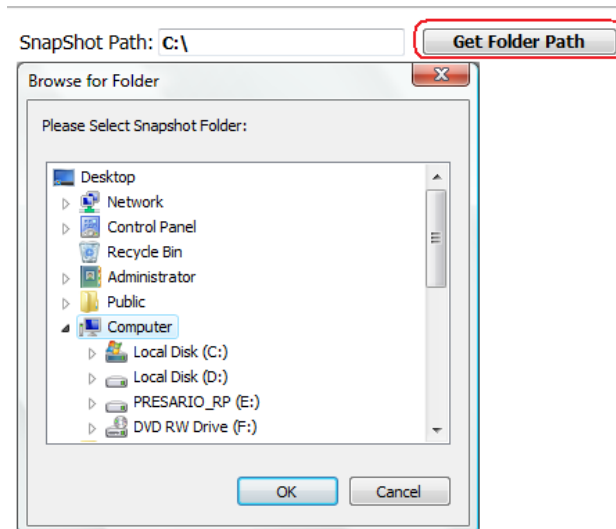
- 2.) Then select Snapshot path

Setting



- 3.) In here browse for the location where snapshot pictures will be stored. By default the snapshot path will be in C:/

Snapshot Path



To use the snapshot function:

1.) Click on the snapshot button



2.) In explorer go to the selected path and the files will be created there.

Image

The image section allows you to change the Image settings for the device and tune the image of the IP Kamera 9070


Image Settings

The Image settings section allows you to change the video settings and the Name of the Kamera.

Image Settings

● Image Settings

● Tune Image



Camera Name:

Video Codec:

Resolution:

Color system: NTSC/60Hz PAL/50Hz

Rate Control:

M-JPEG Setting

Quality:

Frame Rate:

MPEG4-1 Setting

Bit rate: kbps (64~8000)


Frame Rate:

MPEG4-2 Setting

Bit rate: kbps (64~8000)

Frame Rate:

Enable PTZ Enable Disable



Camera Name: Select a camera name for the device and then hit submit Camera Name:

Video Codec:

Video Codec:

- MPEG4+JPEG
- MPEG4+MPEG4+JPEG
- MPEG4+JPEG
- MPEG4+MPEG4
- Single MPEG4

Resolution:

Resolution	
(MPEG4+MPEG4+JPEG):	M4:720P,M4:CIF,JPG:352
(MPEG4+JPEG):	M4:VGA,JPEG:VGA
(MPEG4+JPEG):	M4:720,JPEG:352
(MEG4+MPEG4):	M4:720,M4:CIF
(Single MPEG4):	M4:720

Color System: Select the broadcasting color system that pertains to your country.

NTSC/60Hz
PAL/50Hz

Rate Control: Select the Bit Rate Control that fits your needs.

CVBR: Constrained Variable Bit Rate
CBR: Constant Bit Rate

M-JPEG Settings: The available Quality settings and FPS for the M-JPEG settings are shown below

M-JPEG Quality Settings
High
Medium
Low

M-JPEG Frame Rate Settings
30 FPS
15 FPS
7.5 FPS
3 FPS
1 FPS

MPEG4-1

Bit Rate: Select a value from 64~8000.

FPS: Select a FPS from 30fps, 15fps, or 7.5fps

MPEG4-2

Bit Rate: Select a value from 64~8000.

FPS: Select a FPS from 15fps or 7.5fps

Enable EPTZ: The EPTZ on the IP Kamera 9070 a virtual EPTZ function. This function allows the user to control the video on the Live Video mode by moving left or right, zooming in and zooming out.

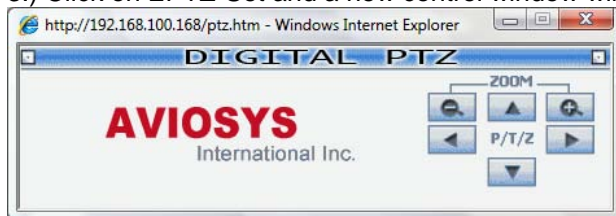
To use the EPTZ mode:

1.) Enable the EPTZ function and then hit the submit button.

Enable PTZ: Enable Disable

2.) Click on Live Video Mode [Live Video](#)

3.) Click on EPTZ-Set and a new control window will pop out.



From here you can control the live videos Zoom Function and direction.

Also once EPTZ is enabled, in the Live View Screen buttons will appear on the bottom for you to pan, tilt, and zoom.

Note: PTZ is only available in the mode below. When you enable PTZ it will automatically jump into that mode.

Video Codec: MPEG4+JPEG
Resolution: M4:VGA,JPG:VGA


Tune Image

The tune image settings section allows you to control and tune the picture quality of the image. Keep in mind, the quality of the picture will also be affected by the quality of the lens that is being used.

Image Fine Tune

Image Settings

Tune Image



White Balance:

Day and Night:

TV Output: Enable Disable

Binning / Skipping mode:

BLC: ON OFF

Backlight

Brightness

Contrast

Saturation

Sharpness

Live Video

Image

Network

System

Application

PTZ-Set

Media Player

- White Balance:** Select from the following options **auto, indoor, or outdoor**
- Day and Night:** Select the mode Day or Night
- TV Output:** Select the mode **enable or disable** to output to a T.V
- Binning / Skipping mode:** Binning enables low light-light performance. Select Binning, Skipping, 4x Binning mode (default is Binning). During
- BLC (Backlight control):** Here Backlight control can be turned on or turned off.
- Backlight:** Backlight controls how the 9070 will react by turning the picture darker or lighter depending on the amount of back light that is available.
- Brightness:** Brightness controls the brightness of the picture.
- Contrast:** Contrast controls the contrasts between the colors
- Saturation:** Saturation controls how saturated the picture is.
- Sharpness:** Sharpness, alters how sharp the picture is

(Default Values)

Default: To Return all values to normal default click on this button.

Note: Make sure you click on the Apply button to save any changes made

Network

Network

Network

Network When the network settings have been changed, please restart the web browser and reconnect to the newly configured network information. Network settings can be modified below. Static IP addressing is enabled

FTP

E-mail SMTP

SNTP

IP Service

IP Address:

Local IP Address:

Subnet Mask:

Default Gateway:

DNS Server:

HTTP Port: (80 or 1025~65535)

MAC:

The network section allows you to setup the network information for the IP Kamera 9070.

IP Address: Actual IP Address of the device can be found here

LAN IP Address: Local Area Network Address.

Subnet Mask: Subnet Mask information

Default Gateway: Default Gateway Address

DNS Server: Domain Name System Address

Http Port: Enter the port that you would like

MAC: The Mac Address information can be found here

Note: Make sure you click on the Apply button to save any changes made

FTP

FTP Server Setting

Network

FTP FTP is a network protocol used to transfer data please setup the correct server setting.

E-mail SMTP

SNTP

IP Service

FTP Server: Port:

User Name:

Password:

File Upload Path:

The FTP allows the user to easily save files onto a FTP server. With the 9070, Video Files & Picture files (Jpeg) can both easily be saved onto the FTP server.

Make sure the following information is filled out correctly

FTP Server: Enter the FTP server address here

User Name: Enter the FTP Username

Password: Enter the FTP Password

File Upload Path: Enter the upload path of the FTP Server

SMTP (Outgoing E-mail Server)

SMTP Server Setting

To use to E-mail function
please enter Outgoing Mail Server (SMTP) of your E-mail Address.

My Server Requires Authentication

Account Name:

Password:

use SSL connect: ON OFF

SMTP Server:

port:


Email Address:

Sender:

Subject:

Content:

Content words should less then 255



Enter the SMTP E-mail server information here.

My Server Requires Authentication: Check this section if your email requires Server Authentication.

Account Name: Enter then login of the mail account

Password: Enter the password of the E-mail account

Use SSL Connect: If the email server requires SSL (Secure Sockets Layer) this option need

Sender Email: Enter the Sender Email Address

SMTP Server: Enter the SMTP Outgoing mail address

Email Address: Enter the Receiving Email address

SNTP

The SNTP is a protocol for synchronizing the clocks of computer systems.

SNTP Server Setting

SNTP is a protocol for synchronizing the clocks of computer systems over
packet-switched, variable-latency data networks
please setup the correct SNTP server information.

SNTP Server:

Time Zone:

Automatically Adjust for Daylight Saving Time Changes.

SNTP Server: Enter the SNTP server address. Below are a list of free public NTP servers.


Europe — europe.pool.ntp.org
Asia — asia.pool.ntp.org
Oceania — oceania.pool.ntp.org
North America — north-america.pool.ntp.org
South America — south-america.pool.ntp.org
Africa — africa.pool.ntp.org


Time Zone: Enter the corresponding time zone


Automatically adjust for daylight saving time: Check this section if you want daylight saving time to be implemented automatically.


IP Service


IP Service

 Network

 FTP

 E-mail SMTP

 SNTP

 **IP Service**

IP Service Server Information below

Enable IP Service

IP Service Server : Kamera Server

Camera Title: IPCAM9070

Country: remark1

City: remark2

MAC: 0090710000c2









Note: Use the MAC address value when using CNT

With IP Service, the user will not have to remember long IP Address numbers. Just enter the name of your device into IP Service and as long as the device has been correctly port forwarded, the user will easily be able to connect to the device

This section allows you to turn of this service.


By default IP service is On. Click disable to close this feature.

System

-  **Date and Time**
-  Time stamp
-  Users
-  Light
-  Reset Autotimer
-  Language Setting
-  Update
-  Events

The system section allows you to setup the IP 9070's system configurations. This includes the following

Date and Time

-  **Date and Time**

Date and Time

The Local Time

Date: Time:

The Desired Time

Set Manually


Date: / / (YYYY/MM/DD)

Time: : : (HH:MM:SS)

Synchronize with Computer Time

Date: Time:

Synchronize with SNTP Server

 SNTP Server: tw.pool.ntp.org

Time Zone:

GMT+08 Taipei, Beijing, Chongqing, Urumqi, Hong Kong, Perth, Singapore

Date Format:

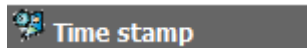
Set the date and Time of the device here.

The Local Time: The local time corresponds to the current time of the IP Kamera 9070.

Time Setup: Setup the current time of the device here

- 1.) **Set Manually:** Set the time manually
- 2.) **Synchronize with Computer Time:** Synchronize the time with the current computers time
- 3.) **Synchronize with SNTP:** Synchronize with SNTP

Time Stamp



The time stamp adds a time to the live video. When a recording is made this time stamp will show up with in the video file as well.

To enable the Time Stamp check the enable box.

Date and Time stamp

Enable Date and Time stamp

Date Format:

User



Users

User List:

admin:Admin

Delete User

Add/Modify User

User Name:

Password:

Confirm:

Authority: Admin Operator Viewer

Submit

The user setting allows you to create and remove users for access to the IP Kamera 9070.

Authority: Select one of the following options:

Admin: Admin can operate all functions in Web interface. Also, add or delete any user's account.

Operator: Operators can operate all functions in Web interface except user Add/Delete.

Viewer: Viewer can only monitor the Web interface, but cannot operate all function and set parameters.

Light



Light

Light State: ON OFF

Submit

The Light function is used to turn on or off the LED spotlight located in the front of the 9070.

Turn on the light: Change the light stage to on and hit submit to turn on the light

Light State: ON OFF

Submit

Turn off the light: Change the light stage to off and hit submit to turn on the light

Light State: ON OFF

Submit

Language

 Language Setting

Language Setting


Language:

Submit

The language setting section is where you can select the language that you would like to use to use the 9070. Currently there are 3 languages available: English, Chinese (Traditional), Chinese (Simplified) there will be more to come.

The 9070 will automatically detect the favored language of choice depending the settings used in Windows.

Update

 Update

Update Firmware

Current Version Description

Kernel Version:Linux version 2.6.10_mvl401_IPNC-1.1.0

UBoot Version:U-Boot 1.2.0 (Apr 21 2008 - 18:41:45) IPNC-U-1.0.2

Firmware Version:IPNC_APP v1.2.1.1

HTML Version:1.2.23

ActiveX Version:1,0,2,15

Device Version:9070

Update the device with the latest firmware.
Specify the firmware to update :

and click

Note: Do not disconnect the power of the device, during the update.
The device needs to be restarted after the update has completed.

Warning:IPCAM will restart immediately!!



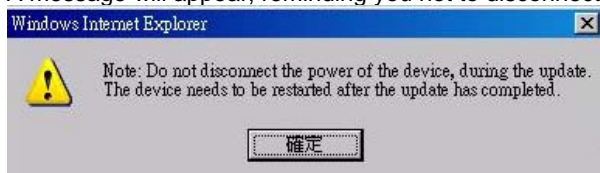
The Update Firmware section is where information on the 9070 is displayed.

The **Kernel Version**, **Uboot Version**, **Firmware Version**, and other technical information on the device is displayed here.

Updating the Device

To update the device go to the update section. Here you will find the Current Version description.
To update the device:

- 1.) Browse for the correct update file.
- 2.) Hit the update button.
- 3.) A message will appear, reminding you not to disconnect when updating.



- 4.) Please view the bar on the bottom of internet explorer to make sure that the device is updated.

正在等候 http://58.114.176.99:8085/update.cgi...

- 5.) When update is complete a new screen will appear then connect back to your device.


File create success. File system update success. Firmware update success

[go back](#)

Warning: Before you go to the next step make sure you have all your setting information written down. The device will reset back to manufacturers default values after you restart the device. You will need reconfigure the IP Kamera 9070, including Email, FTP, IP Address, Gateway, and etc.

- 6.) Enter update page, then hit the restart button. [Restart](#)
- 7.) Then make sure you re-setup the device.

Event Log

 Events

Event Log

Item	Date and Time	Events
1.	2000-01-01 09:05:13	admin login on 192.168.100.16
2.	2000-01-01 08:33:43	admin login on 192.168.100.16
3.	2000-01-01 08:13:42	Motion alarm
4.	2000-01-01 08:08:05	Motion alarm
5.	2000-01-01 08:05:03	Motion alarm
6.	2000-01-01 08:04:53	Motion alarm
7.	2000-01-01 08:04:43	Motion alarm
8.	2000-01-01 08:04:33	Motion alarm
9.	2000-01-01 08:04:04	Motion alarm
10.	2000-01-01 08:03:46	Motion alarm
11.	2000-01-01 08:03:35	Motion alarm
12.	2000-01-01 08:03:25	Motion alarm
13.	2000-01-01 08:03:15	Motion alarm
14.	2000-01-01 08:03:04	Motion alarm
15.	2000-01-01 08:02:53	Motion alarm
16.	2000-01-01 08:02:28	Motion alarm
17.	2000-01-01 08:02:16	Motion alarm
18.	2000-01-01 08:02:06	Motion alarm
19.	2000-01-01 08:01:55	Motion alarm
20.	2000-01-01 08:01:51	admin login on 192.168.100.15

[First Page](#)













[Previous 20](#)

[Next 20](#)



Application

Setting

-  Snapshot Path
-  Video File
-  FTP
-  SD Card
-  E-mail SMTP
-  EZ Blog
-  Media Player
-  My Web
- Schedule Record**
-  Schedule
-  Enable Schedule Record
- Alarm**
-  Motion Detection
-  Enable Alarm

Setting

Snapshot Path

Snapshot Path

Snapshot Path

Snapshot Path:

The Snapshot path is the location where the snapshot pictures will be saved onto your computer. The default snapshot path will be set to C:\. To select the snapshot path click on the

button and select the folder where the snapshots will be saved.

Video File

Video File

Video File

AVI Duration: Second(s)

AVI Format:

If AVI duration is '--', that means you insert the SD card .
Beacuse at the same time ,MPEG recorder only can work in the SD card.
If you want to save MPEG on the FTP or SMTP,please remove SD card.

Select the Video File format that the device will record in. This setting will affect the FTP and the SMTP(Email) video formats.

1.) **Avi Duration:**

From the drop-down list, select the length of an AVI file.

2.) **Avi Format:**

MPEG4(720)
MPEG4(CIF)

3.) Hit the submit button to confirm new settings.

FTP



Note:

1.) Before you use the FTP function, you will need to set the FTP server information. You can click on the [FTP Networking](#) link to take you to the FTP setup section.

2.) If the SD Card is inserted into the device, the 9070 will only be able to record in M-Jpeg mode to the FTP.

FTP Application Setting

[FTP Networking](#)

FTP Server: 192.168.1.1 Port:21
User Name:
File Upload Path: default_folder

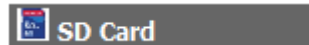
Storage Setting

File Format:

Lefted the SD Card or Select other image Setting than you can select more option. [Image Settings](#)
Beacuse at the same time ,MPEG recorder only can work in the SD card.
If you want to save MPEG on the FTP or SMTP,please remove SD card.

In the FTP section, you can set the file format that you would like to use for FTP transfer.

SD Card



SD Card Application Setting

Split Filename Type:
Split File Size (MB) :
File Format:

Enable Auto Overwrite
(When SD card is full, Auto Overwrite will replace oldest file.)

SD Card Capacity: 477.88 MB

SD Card Usage: 0 %

(Storage Disk Format) (Storage Disk Unmount) (Save Changes)

File Format: Select the video format that you would like to save into the SD card

Split Filename Type: Select the format that you would like to save the files in the SD card. You can pick from:

Name by Index: Creates file names according to index.

Name by Time: Creates file names according to time.

Split File Size: Select the size of each file that will be saved into the SD.

You can select from:

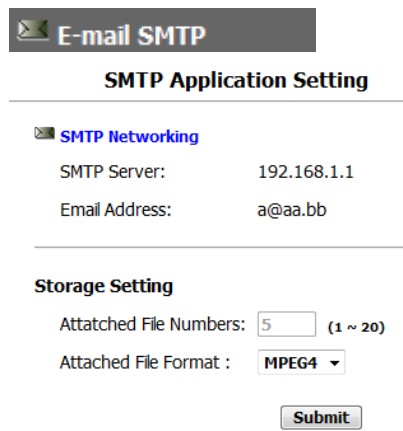
None, 10mb, 25mb, 50mb, & 100mb.

Enable Auto Overwrite: Auto Overwrite allows the device to automatically replace the oldest file on the SD card when it is full.

SD Format: SD format will format the entire SD card

SD Unmount: Click the SD unmount button when the SD card is being removed this will safely remove the card without any damages.

E-mail SMTP



E-mail SMTP

SMTP Application Setting

SMTP Networking

SMTP Server: 192.168.1.1

Email Address: a@aa.bb

Storage Setting

Attached File Numbers: (1 ~ 20)

Attached File Format :

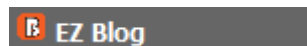
In the settings section, you can find the SMTP information by clicking on the SMTP tab. Here you can see the current SMTP Server information and email address.

Storage Settings

You can also select the file format in which you would like the IP Kamera 9070 to send.

Select from **MPEG4** or **MJPEG**.


EZ-Blog



Note: To use the Ez Blog functionality, please make sure that your device has been port forwarded so that it can be accessed through the internet.

EZ Blog allows you to easily integrate code into your blog which will let you directly stream into your blog, website, and any compatible site. This way you can IP Kamera as more than a regular security camera but also a promotional tool. **Any blog platform that supports Javascript can utilize Ez blog (i.e Blogspot).**

EZ Blog

User List:  Users

admin:Admin
quest:Viewer

User Name:


Password:

Height:

Weight:

Embed Code (Highlight Entire Code):



User List: This shows the Users Available to create an Ez Blog link with. Use a guest user account of the 9070 to create the EZ-Blog. You can easily create more users on the 9070 by clicking on the User link  **Users** menu.

Setup the Embed Code

The Embed Code will be input into your html coding of your blog, website, etc.

- 1.) Type in the correct user and password for your 9070 account. (We highly recommend using a guest account)

User Name:

Password:

Height:

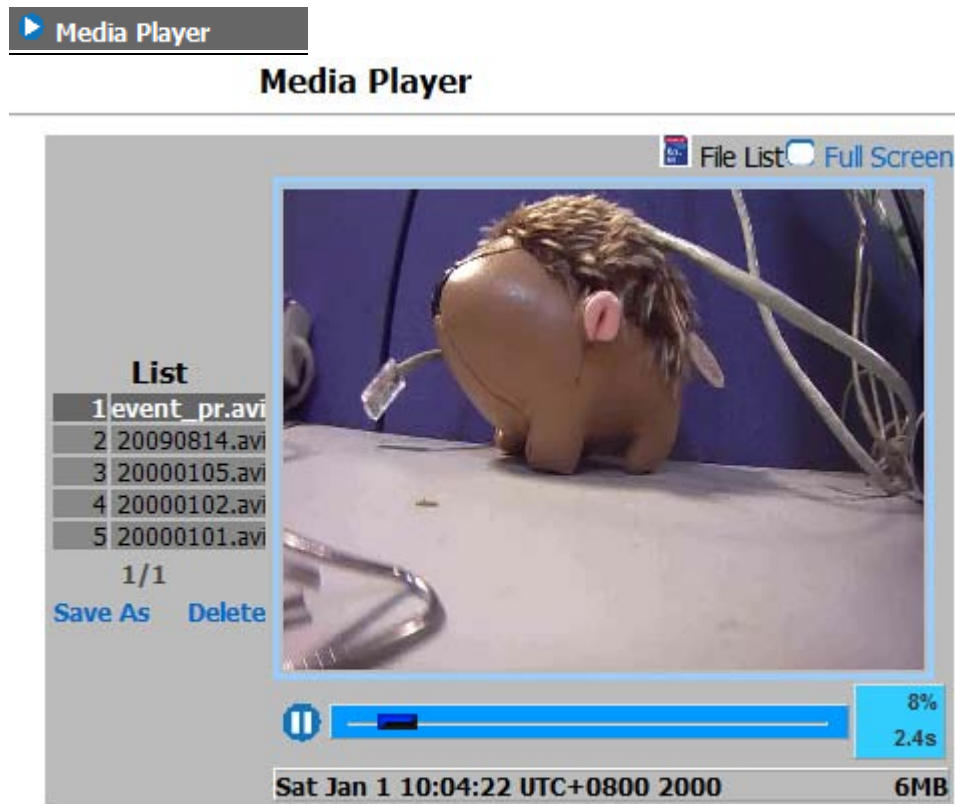
Weight:

- 3.) Click on the create code button.

Embed Code (Highlight Entire Code):

- 4.) You can highlight the embed code from inside the box and then copying (ctrl + C) or you can just hit the copy button to copy the code.
- 5.) Place that code somewhere in the body of your blog platform or website to display the video on the blog.

Media Player



If you can not see anything , pls download kite code.

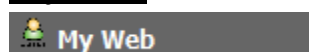
The media player allows you to view your recordings on the SD card directly through the internet without requiring downloading the file first. This feature makes it very convenient for live streaming.

View in Full Screen

To view the IP Kamera in full screen model you will need to press the Full Screen mode.



My Web



My Web

Enable My Web: ON OFF

Login Required: ON OFF

Upload My Web Zip File

Download and use the sample MY Web as reference or revert the current My Web back to the manufacturer default.

The screenshot shows a web interface with a dark blue navigation bar at the top containing links: Info, LiveDemo (highlighted), About Me, Item1, Item2, Contact, Links, and Admin. Below the navigation bar, the main content area is divided into two columns. The left column features a 'Live Demo' section with a video player showing a brown pig-like robot on a stage. Below the video is a 'Facebook' section with a 'facebook' logo and a 'Connect' button. The right column has an 'About Me' section with the name 'Angela', age '30', and location 'Taipei, Taiwan', followed by a 'Control Live Demo' section with buttons for 'Play M-JPEG', 'Play MPEG-1', 'Play MPEG-2', 'STOP', 'Record Start', 'Record Stop', 'Snapshot', 'Audio ON', and 'Audio OFF'. At the bottom of the right column is a 'Links' section with 'Link1', 'Link2', and 'Link3'.

The My-Web functionality will make your IP Kamera more than just a surveillance tool. Now you can use it to promote your company, restaurant, business, school, and etc. With some basic website skills or tools any can make a My Web site.

Turning On My Web

Enable My Web: ON OFF

Login Required: ON OFF

Enable my web button:

The enable My Web button will activate the My Web functionality. Once enabled every time the device is accessed it will be set to the My Web Page.

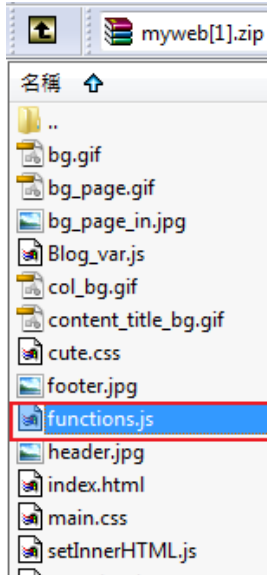
Login Required:

The login required will require your My Web users to login to the device before being able to use it. This is a way to keep unwanted viewers from entering the My Web

Setting up My Web

To setup My Web you can download the MyWeb file from the 9070.

- 1.) Click on the Download Default Page.
- 2.) Save the Zip file to a location where you can edit it
- 3.) Extract the file functions.js



- 4.) Start creating a My Web and be sure to include the functions.js into your code.
(Note: Do not include folders within the webpage.)
- 5.) After you have created the webpage, make sure to create a Zip file. Zip up the file and

Returning to default My Web page

If you would like to return your 9070 to the default My Web page click the default My Web Page button. This will reset the current My Web to the original manufacturer default.

Using My Web

To use the My Web feature:

- 1.) Use IPedit and directly log into the IP camera.
- 2.) The device will open the root page of the 9070 to the My Web page.
- 3.) If you would like to return to the normal administrator page for the 9070 you can login to the admin site.

For Example:

9070 IP Address: 192.168.12.111 **Port:**8080

Then on the web browser type in the following

<http://192.168.12.111:8080/index.htm>

Schedule Record

Schedule

Schedule

Monday From 10:30 To 22:35
Tuesday From 03:39 To 11:51
Wednesday From 03:23 To 19:23
Thursday From 00:00 To 00:00
Friday From 00:00 To 00:00
Saturday From 00:00 To 00:00
Sunday From 00:00 To 00:00

	0	1	2	3	4	5	6	7	8	9	10	11	12	13	14	15	16	17	18	19	20	21	22	23
SUN																								
MON																								
TUE																								
WED																								
THU																								
FRI																								
SAT																								

Submit Remove All Schedules

The schedule allows you to select days and times that you would like to schedule automatic recording. You can pick a day from (Sunday – Saturday) and also a option for Everyday.

To schedule automatic recording:

- 1.) Select the day that you would want to start recording.
- 2.) Select the **From time** and the **To time**.
- 3.) Once the schedule has been created hit the submit button to apply the new settings.

Schedule Record

Enable Schedule Record

Schedule Record Application Enable Setting

- Schedule Record - Upload Via FTP
- Schedule Record - Save Into SD Card

Submit

Schedule Record allows you to select where the schedule will record the video files to.

Schedule Record – Upload Via FTP: Saves schedule recordings into FTP

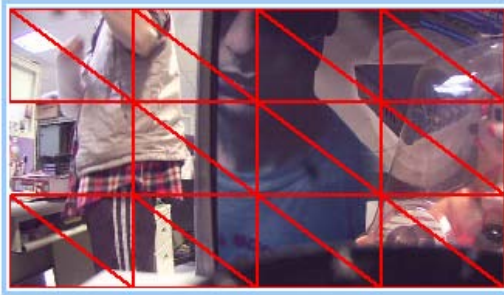
Schedule Record – Save into SD Card: Saves schedule recordings into SD Card

Alarm

Motion Detection

Motion Detection

Motion Detection



Click the right mouse button to show the popmenu.
Save the setting after you finish editing.

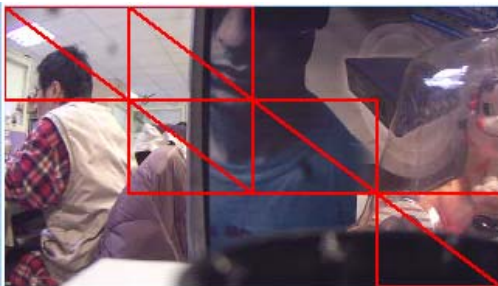
Motion Detection: Enable Disable

Sensitivity : Lowest 50 (Customized Threshold)

Submit

To enable motion detection:

- 1.) Select Enable in the motion detection option.
- 2.) Select the sensitivity of your choice
 - a. You can pick from Lowest, Low, Medium, High, Highest
 - b. You can also customize your own threshold from (1-99)
- 3.) Once you have set your settings on the window screen click on the picture where you want the motion to be detected. Double click on the selected areas to remove the choice.




You can right click on the window screen for more options




- 4.) Once your settings have been set hit the submit button to save all changes.

Enable Alarm


 **Enable Alarm**


Alarm Application Enable Setting


Connection Lost

Enable Alarm - Save Into  **SD Card**

Motion Detection

Enable Alarm - Upload Via  **FTP**

Enable Alarm - Save Into  **SD Card**

Enable Alarm - Upload Via  **SMTP**

Recording Time:

Enable **Alarm Recording Buffer**

Buffer Time :

(Note: For Alarm Recording Buffer to work correctly an alarm above must be activated.)

Enable Alarm – Lost Ethernet Connection: Save into **SD Card:**

When Ethernet connection is lost the device will automatically save into the SD card. Saving a backup.

Enable Alarm - Upload **FTP**

When motion is detected, the IP Kamera 9070 will upload the video file to the selected FTP server.

Enable Alarm - Save Into **SD Card**

When motion is detected, the IP Kamera 9070 will upload the video file to the SD card.

Enable Alarm – Save **SMTP**

When motion is detected, the IP Kamera 9070 will send the video file to in a E-mail format.

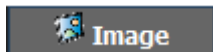
Recording Time: Set the duration of time you would like the IP Kamera 9070 to record when alarm is set off.

Enable Alarm Recording Buffer: The alarm recording buffer allows the camera to the selected amount of buffer time before an alarm has been detected. This allows the IP Kamera 9070 to start recording before any incident has occurred.

EPTZ-Set

The EPTZ allows you to Pan, Tilt, & Zoom the image that you are viewing. To activate this feature EPTZ must be enabled in the Image section of the 9070.

Enable PTZ: Enable Disable



Note: When EPTZ Controller is activated Video Codec mode will be switched to MPEG4 & M-Jpeg when disabled the codec will be set on Mpeg1, Mpeg2, & M-Jpeg.

How to use EPTZ with the mouse

On the Live view Video screen the EPTZ controls are:

Zoom In: Click and Hold the left mouse in the live view then release when zoomed to preferred point

Zoom into highest: Double click left mouse

Zoom out: Click and Hold the right mouse in the live view then release when zoomed to preferred point

Zoom out to screen fit: Double click right mouse

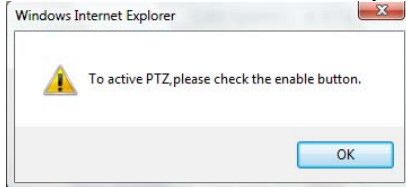
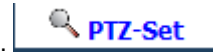
Note: When using the mouse to zoom in the snapshot function will not take a picture of the zoomed picture but the resolution size.

How to Enable and Use EPTZ Controller

Note: When EPTZ is activated Video Codec mode will be switched to MPEG4 & M-Jpeg when disabled the codec will be set on Mpeg1, Mpeg2, & M-Jpeg.

Also snapshot function works only with the EPTZ controller and not when using the mouse to EPTZ.

- 1.) Click on the EPTZ button located on the bottom of the screen of the 9070.
- 2.) If the EPTZ has not been enabled you will be notified that it must be enabled.



- 3.) Select Enable on the EPTZ function then hit the submit button

Enable PTZ: Enable Disable

Submit

Once the Speed dome controller is activated you can click on left, right, up, down, and zoom buttons to view the picture.



Note: To use EPTZ without activating

7.) Controlling the Device

CGI HTTP Commands

Http commands allow you to control the device with commands. The basic commands are provided below.

There are two ways to input http commands with authorization required

Password in http:

`http://login:password@ipaddress:port/command`

Password not in http:

`http://ipaddress:port/command`

Note: If you use the password not in http: command you will need to enter it when the browser asks for the password.

Snapshot Command:

The snapshot command takes a snapshot of the camera in the current view.

`http://ipaddress:port/snapshot.cgi`

Ex. http command:

<http://192.168.100.50:85/snapshot.cgi>

Change Name:

This command allows you to change the name of the IP Kamera 9070

`http://ipaddress:port/vb.htm?cameratitle=name`

Ex. http command:

http://192.168.1.192/vb.htm?cameratitle=test_907011

Change IP Address:

This command allows you to change the IP Address of the IP Kamera 9070

`http://ipaddress:port/vb.htm?internetip=ipaddress`

Ex. http command:

<http://192.168.1.192/vb.htm?internetip=192.168.1.191>

Change Port:

This command allows you to change the Port of the IP Kamera 9070

`http://ipaddress:port/vb.htm?httpport=portnumber`

Ex. http command:

<http://192.168.1.192/vb.htm?httpport=1025>

Change Subnet Mask:

This command allows you to change the Subnet Mask of the IP Kamera 9070

`http://ipaddress:port/vb.htm?subnetmask=subnetmask`

Ex. http command

<http://192.168.1.192/vb.htm?subnetmask=255.255.0.0>

Note: Default subnet mask is 255.255.0.0

Change Gateway:

This command allows you to change the gateway the IP Kamera 9070.

`http://ipaddress:port/vb.htm?gateway=gatewayaddress`

Ex. http command

<http://192.168.1.192/vb.htm?gateway=192.168.1.1>

Change DNS:

This command allows you to change the gateway the IP Kamera 9070.

`http://ipaddress:port/vb.htm?dnsip=dnsipaddress`

Ex. http command

<http://192.168.1.192/vb.htm?dnsip=168.95.1.1>

MJPEG Streaming

This command allows you to integrate streaming data into a software, website, or any other application.

<http://ipaddress:port/ipcam/mjpeg.cgi>

Ex. http command

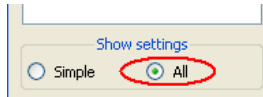
<http://192.168.1.192/ipcam/mjpeg.cgi>

8.) Using RTSP with VLC

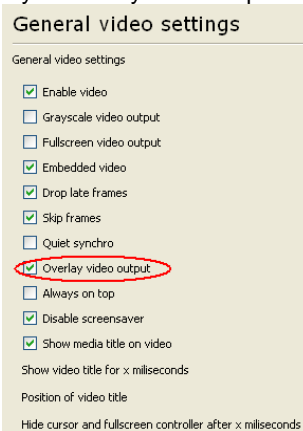
Before Setting up VLC: Make sure that the 9070 is set to be the DMZ host on the router that you are using, please refer to the routers manual on how to accomplish this.

How to setup VLC media player & Open a network stream

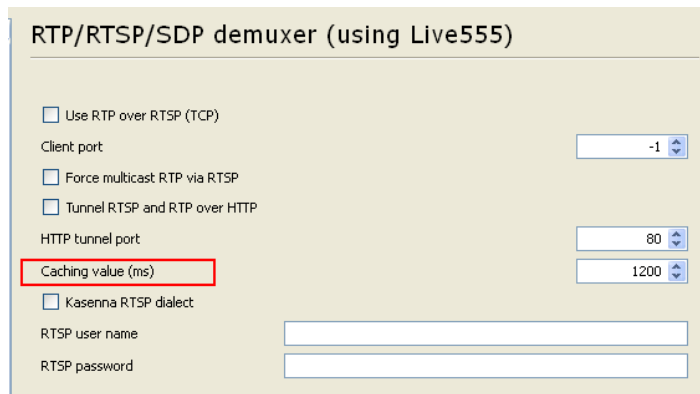
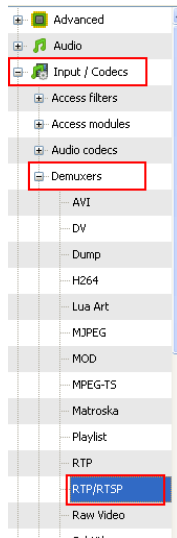
- 1.) Open VLC media Player
- 2.) Click on Tools > Preference
- 3.) Click on the Reset Preferences
- 4.) On the bottom left hand side of VLC select the all under the show settings area.



- 5.) Then in the left panel select the video option  and check in the box that says "Overlay video output"

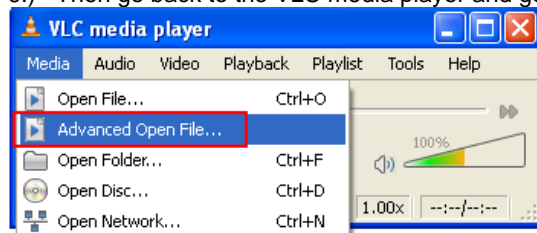


- 6.) Then on the left panel select Input / Codecs > Demuxers > RTP/RTSP.

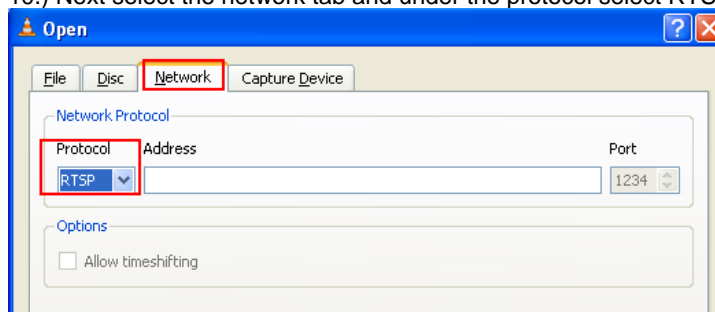


- 7.) Check the Cache value. *For low latency, it should be 70~80 based on PC's performance.*
 Note: If the video is not smooth, set the caching value from 150~1200. This problem could be due to too much congestion, busy pc, and etc.
- 8.) Save the new settings

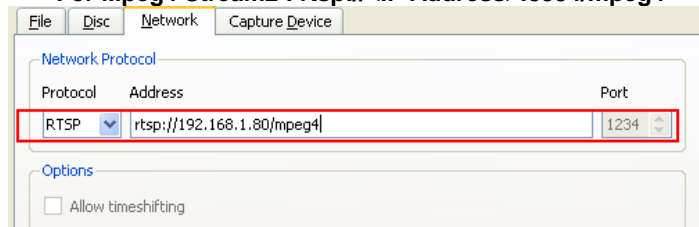
- 9.) Then go back to the VLC media player and go to Media > Advance Open File



- 10.) Next select the network tab and under the protocol select RTSP.



- 11.) Type in the RTSP address of your device
For Mpeg4 Stream1 : rtsp://<IP Address>/mpeg4
For Mpeg4 Stream2 : rtsp://<IP Address>:8554/mpeg4



Hit the play button when all settings have been set.

9.) Using CNT with Surf16 CH

CNT makes connecting to the IP Kamera 9070 a very simple task. Using Surf 16 CH and multi device DVR monitoring software, you can easily view your 9070CS. Follow these simple steps:

Finding the MAC Address

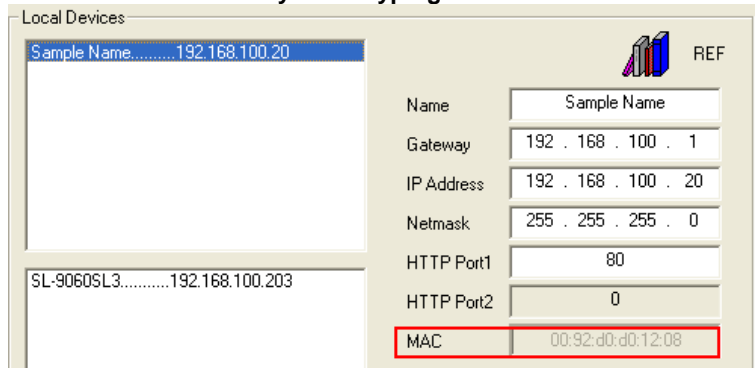
There are two ways to find the MAC address in IPEdit.

***Note: IP Server must be enabled on your device's webpage. By default IP Server is enabled.**

Find MAC Address in LAN Using IPEdit

- 1.) In IPEdit, highlight the device that you are using. On the right side of IPEdit you will find the MAC Address that you will need to use CNT.

***Note: Make sure when you are typing in the MAC address to leave out the “:”**

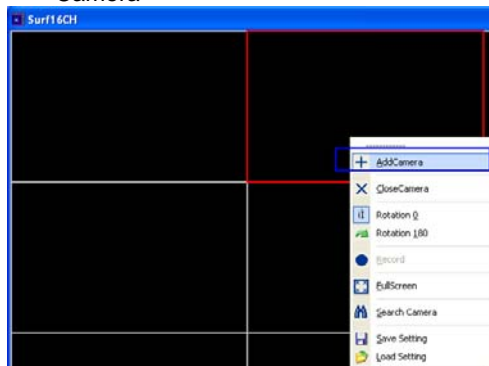


Find MAC Address in WAN Using IPService on IPEdit

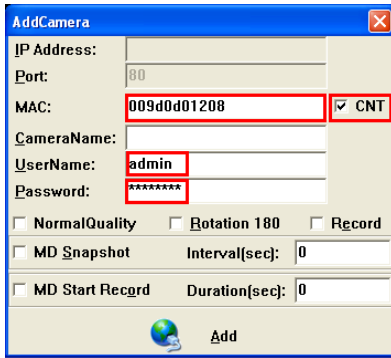
- 1.) To find your MAC Address through the internet, Open IPEdit and hit the connect button on IP Service.
- 2.) Then Type in the name of your device in this case it is “Sample Name”, then hit the search button.
- 3.) Your device should be listed and the MAC address should be displayed on the screen. Copy down the MAC address and use it to connect via CNT.

Add device using CNT

- 1.) On Surf 16 Ch DVR software, right click on the screen on one of the windows and select Add Camera



- 2.) Then under the section labeled **MAC:** Type in the MAC address.



3.) Do not forget to enter the password and login.

10.) Frequently Asked Questions (F.A.Q)

Q1: Why can't I view the video files that I have recorded, nothing is playing?

Ans: VLC Codec, you can download VLC Codec from their website at:

Q2: How do I reset the device to manufacturers default values

Ans: On the back of the device there is a reset button, hold down the reset button for more than 7 seconds. Then give the 9070 a 1 minute to restart. Once the device has restarted it will be set back to manufacturer default settings.

Default Values

Default IP: 192.168.1.168 (When 9070 is connected to PC directly)

Default Login: Admin

Default Password: 12345678

Q3: Why does the device on EPTZ change my video mode?

Ans: When EPTZ is activated Video Codec mode will be switched to MPEG4 & M-Jpeg when disabled the codec will be set on Mpeg1, Mpeg2, & M-Jpeg.

Q4: How do I take snapshots using the EPTZ function?

Ans: When using EPTZ function remember that only the snapshot functions works with the EPTZ controller. If you are just using the mouse to Pan Tilt and Zoom into your picture you the snapshot button will not capture the screen correctly. A way you can take a picture of the screen using the EPTZ with the mouse is to click on the print screen button on your computer.

Q5: Why is the RTSP not connecting to my VLC player or Quicktime Player?

Ans: To use the RTSP functionality it is necessary to first set your 9070 to be the DMZ host in your network. Please refer to the routers manual on how this is setup