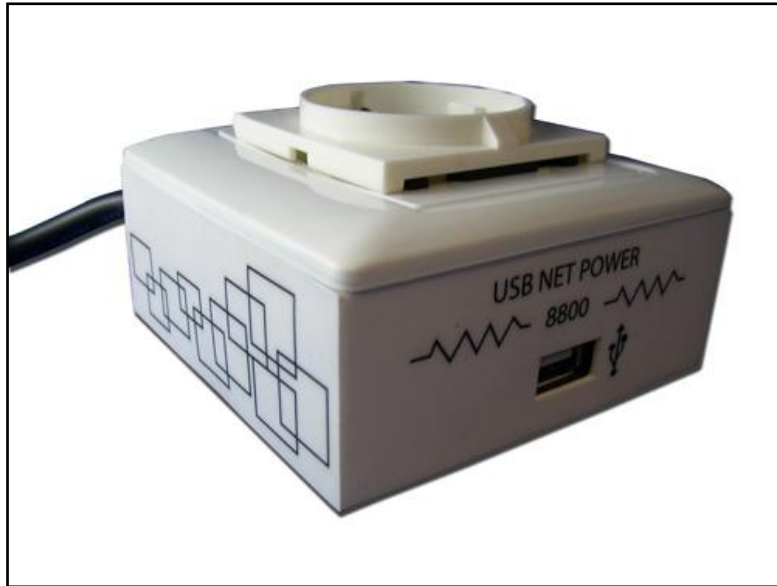


USB Net Power 8800 Manual



Release Date: 11/12/2010

Manual Version:1.0

Table of Contents

Welcome	3
Introduction	3
Minimum System Requirements.....	3
Product Overview	4
Features.....	4
Specifications	4
Package Contents	5
Product Interface	6
Hardware Interface	6
<i>Front View</i>	6
<i>Back View</i>	6
<i>Replacing the Fuse</i>	7
Software	8
Installation Instructions	8
Software Interface.....	10
Date & Time	10
Scheduler	10
On / Off Controls.....	12
Remote Settings	13
Power Timer	13
Logs & Messages.....	14
Clear Logs	14
Update Software	14
Controlling Power Remotely	15
Using Mac.....	15
Using GAE.....	16
FAQ.....	19
FAQ.....	19
Customer Feedback	19

Welcome

Introduction

The USB Net Power is an economical device for network power control. With this device power control could not be any easier.

Simply plug in the device, run the software and now anyone can turn on turn off their devices via the PC.

Also with a scheduler function included this device can easily become automated to turn on and turn off anything connected. Based off of Aviosys IP Power design this new 1 port economical solution allows flexibility of using this device for any situation and location. All you need is a PC and a power jack and you can control anything.

Minimum System Requirements

CPU Minimum Requirements

- Intel(R), Pentium(R), DUAL Core (D),CPU 3.0GHz or equivalent
- Operating Systems: WINDOWS Operating Systems (IE5.0+SPI)
- 512 MB system memory or above
- Video Card: 3D hardware accelerator card required – 100% DirectX 9.0c compatible
- 10/100 Ethernet switch/hub
- Sound Card: DirectX 9.0c compatible sound card
- Ethernet network port/card
- Network cable
- Internet (For remote access) or Ethernet Network (Internal Network use) with some type of Internet connection, (i.e. ADSL, Cable, Dial up or any other forms of Internet service)

Product Overview

Features

1. Remote & Local power control: Turn ON / OFF devices.
2. Control through any other PC on Internet.
3. Timer Scheduler: Preset the time to control power on / off
4. Exchangeable Fuse Protection.
5. SDK Available
6. User friendly, compact, and simply just plug & play.

Specifications

Model: USB Net Power 8800

Input Voltage Range: 100V ~ 240V

Maximum Current: 6A

Weight: 300 grams

Dimensions: 85mm x 85mm x 50mm

Operation Temp: 0°C ~50°C, (32°F ~120°F)

Package Contents



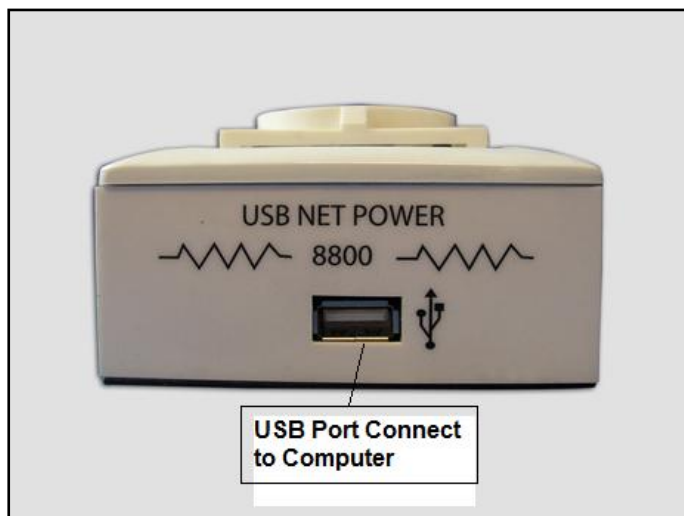
<p>8800 Device x 1</p>	
<p>USB Cable</p>	<p>USB cable that is used to connect the 8800 to the computer that will be controlling the device.</p> <div data-bbox="882 1202 1249 1485" data-label="Image"> </div>
<p>Installation CD</p>	<p>Comes with drivers, manual, and software.</p>
<p>Extra Fuse</p>	<p>Extra fuse is provided.</p>

Product Interface

Hardware Interface

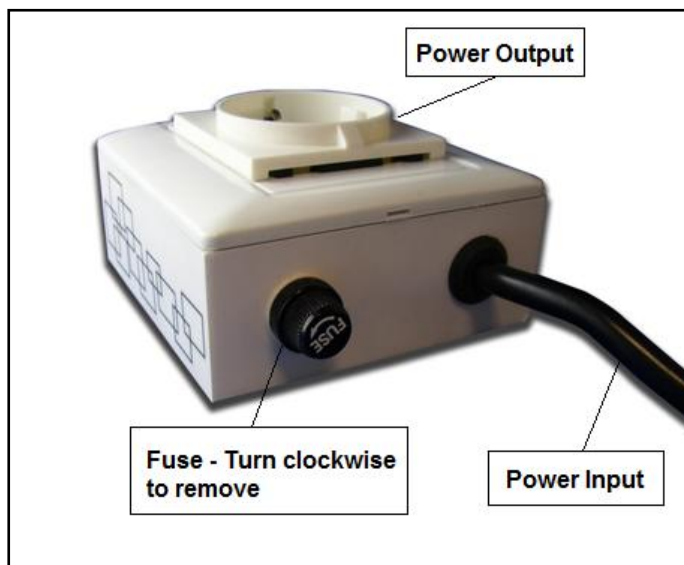
Front View

The front view of the 8800 consists of a USB port that allows you to connect the 8800 to the computer.



Back View

On the back of the device there will be a fuse section and the Power Input cord that will be connected to your power source.



Replacing the Fuse

The specs for the device are the following:

Model: USB Net Power 8800

Input Voltage Range: 100V ~ 240V

Maximum Current: 6A

Weight: 300 grams

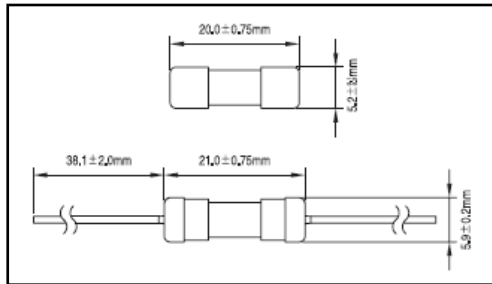
Dimensions: 85mm x 85mm x 50mm

Operation Temp: 0°C ~50°C, (32°F ~120°F)

Fuse Specs:

European Standard: 6.3A

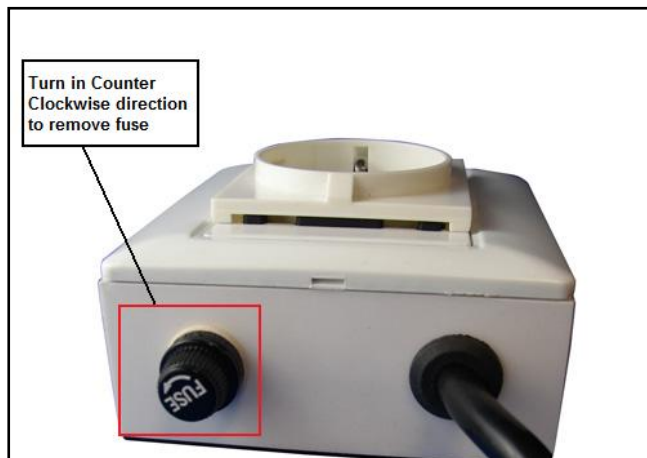
American Standard:6A



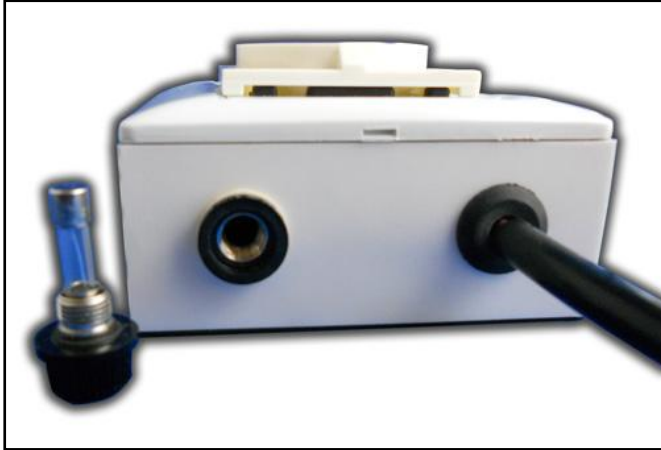
If you find that the device is not working correctly you may check the fuse to see if it is still intact.

To replace the fuse on the device please follow the following directions.

- 1.) Turn the fuse switch in a counter clockwise direction and pull out the fuse once unscrewed.



- 2.) Then replace the fuse with the new fuse and screw in the fuse in a clock wise direction. Make sure that the fuse is securely tightened to prevent device from functioning incorrectly.



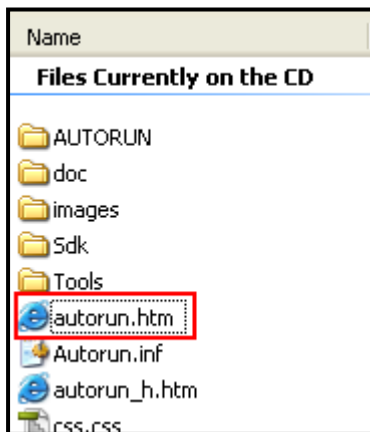
Software

Installation Instructions

The software for the device is located on the **Media Link-IP Family CD** that came with the device.

Please follow the directions carefully and install the necessary files

- 1.) First place the **Media Link-IP Family CD** that came with your device into your CD/DVD Rom drive. The CD should auto run but if it does not go to the CD/DVD Rom drive and select the file "autorun.html".



2.) Select the Usb Net Power 8800 in the USB Series section.

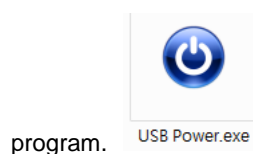


3.) Download the following software and save them to the appropriate locations.



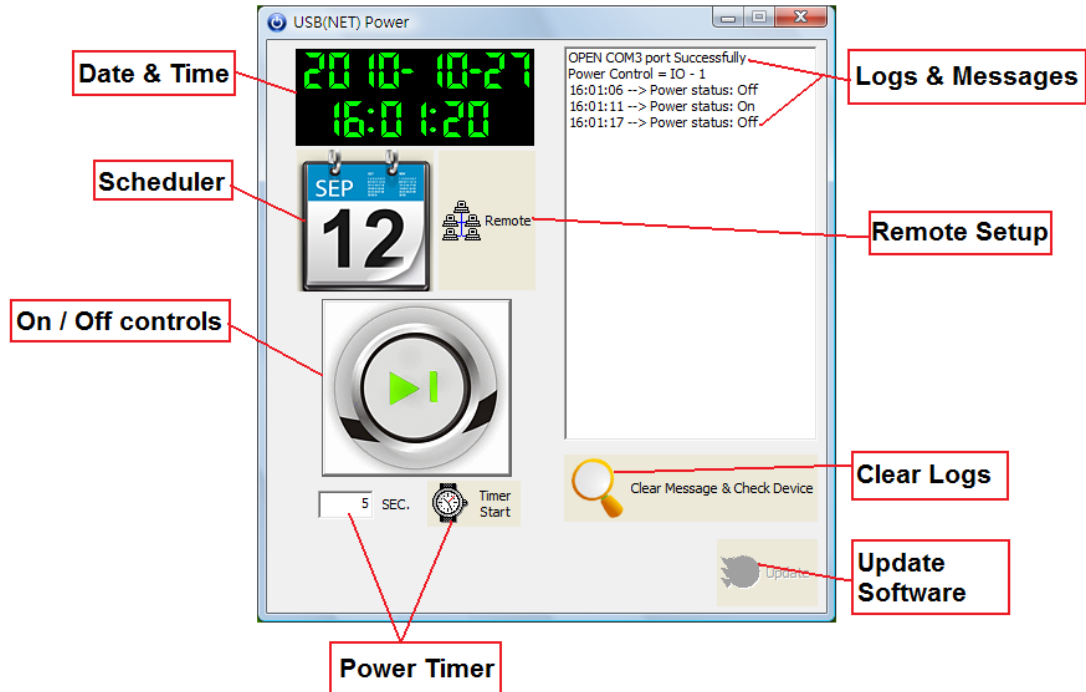
- a. **USB Net Power** – The USB Net Power software is specifically used to control the device, set a schedule, and setup remote control
- b. **IP Power Center** – This software is used to manage IP Power products. It allows a easy way to control devices
- c. **USB Net Power Driver** – **The driver must be installed for the device to work correctly when connected to a computer.**

4.) Once installation is complete please double click on the USB Net Power Icon to start the



program.

Software Interface



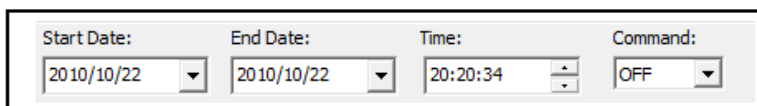
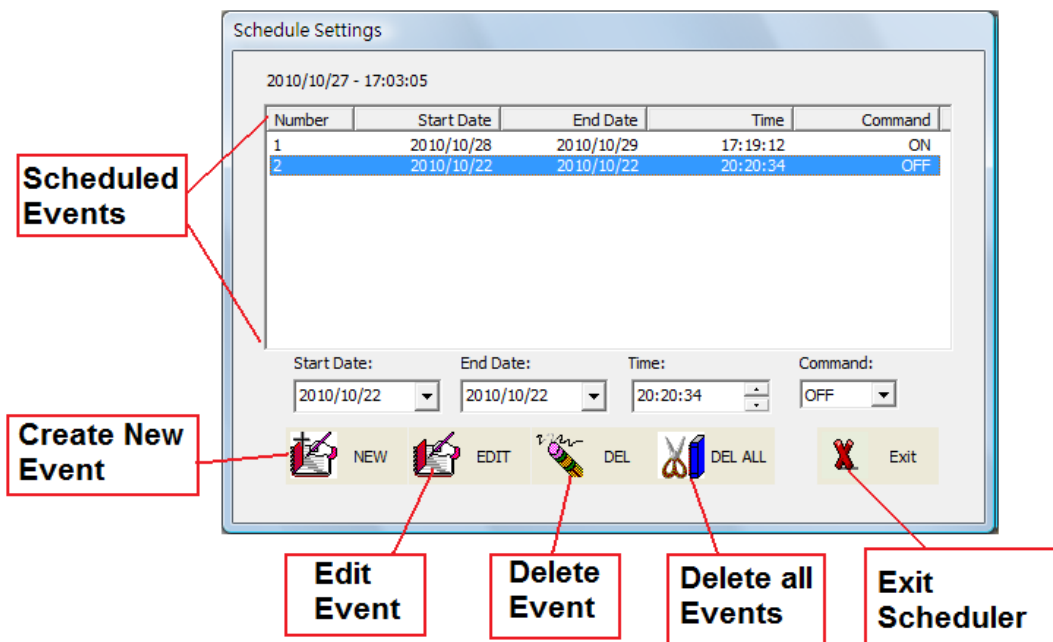
Date & Time

The date and time section will automatically synchronize the time and date with the computer that is being used. This time will be used to setup the scheduler for the device so that it can correctly turn on and off devices at the desired times.

Scheduler

The scheduler allows you to schedule events when your device will turn on / turn off. This creates a very powerful tool, in that all your power needs can become automated. There will be more detailed information below regarding this section of the software.





Start Date: Choose the date of when you want the device to turn on or off. Simply type in the date you would like or click on the dropdown menu to present the calendar. Then simply click on the desired date.



End Date: Choose the date when you want the event to stop happening.

Time: Select the time when the device will activate.

Command: The action that is desired during the specified date and time.

Create Event

To create a new event, follow the following steps:

- 1.) Select a **Start date** of when you would like to activate the command.
- 2.) Then select an end date. If you select a end date a few days later this means the device will turn on

everyday at the desired time until the end date has been reached.

- 3.) Then select a Time and for the command choose on or off
- 4.) Once everything has been set make sure to hit the New button to add this new event to your scheduler

Edit Event

To edit an existing event, follow the following steps:

- 1.) Click on the event located in your scheduled events section that you would like to edit
- 2.) Then you change the values the different fields for the **Start date, End date, Time, & Command.**
- 3.) Once you have edited the event click on the Edit Event button to save the settings

Delete Event

To delete an existing event, follow the follow steps:

- 1.) Select the event that you would like to remove from your scheduled events section
- 2.) Then hit the delete event button to delete the event.

Delete All

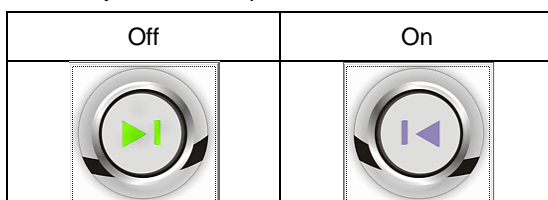
To delete all scheduled events, follow the follow steps:

- 1.) Click on the delete all button to delete all the fields in the scheduler.
- 2.) The program will ask you to reconfirm before deleting all scheduled events.

On / Off Controls

The on / off controls allows you to directly control the device. From here you can instantly turn on / turn off your connected device. To the right of this feature you will see a log file which will show you the current status of the device.

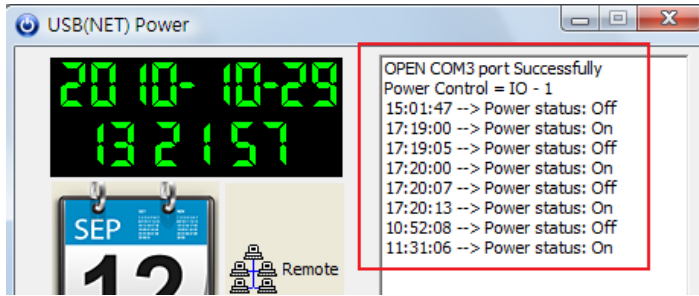
Basically click on the picture to activate or turn off the relay.



- Note: There is a 5 second period between each time you can turn on or off the device.
If you click to fast the error message you will receive will look like this.

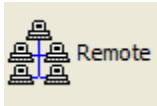


To the right side of the program you will see a message log that will keep track of power statuses being used. It will report the time and status so that you can easily keep track of your power status.



Remote Settings

The remote setting section is where you can setup the device so that it can be controlled from outside the network. This means as long as the computer with the 8800 is attached and the software is running you will be able to control the device from a remote location.

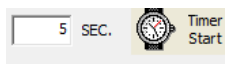


Please refer to the section "**Remotely Controlling Power**" for details on how to setup this section

Power Timer

The Power Timer on the USB Net power software is used to alternate commands in a specified amount of time. The power timer cannot be set at a time lower than 5 and what it basically does is it alternates the power between the specified amount of time.

For example: If you set 5 seconds as the time delimiter, then every 5 seconds the device will automatically switch from 1 state to the other.

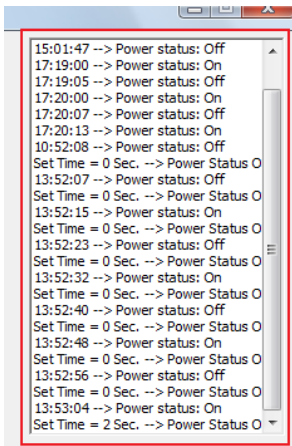


Simply press the Timer start to start the timer and in the log you may see the following.

```
15:01:47 --> Power status: Off
17:19:00 --> Power status: On
17:19:05 --> Power status: Off
17:20:00 --> Power status: On
17:20:07 --> Power status: Off
17:20:13 --> Power status: On
10:52:08 --> Power status: Off
Set Time = 0 Sec. --> Power Status O
13:52:07 --> Power status: Off
Set Time = 0 Sec. --> Power Status O
13:52:15 --> Power status: On
Set Time = 0 Sec. --> Power Status O
13:52:23 --> Power status: Off
Set Time = 0 Sec. --> Power Status O
13:52:32 --> Power status: On
Set Time = 0 Sec. --> Power Status O
13:52:40 --> Power status: Off
Set Time = 0 Sec. --> Power Status O
13:52:48 --> Power status: On
Set Time = 0 Sec. --> Power Status O
13:52:56 --> Power status: Off
Set Time = 0 Sec. --> Power Status O
13:53:04 --> Power status: On
Set Time = 2 Sec. --> Power Status O
```

Logs & Messages

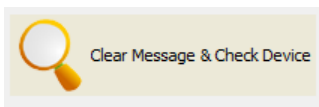
The logs and messages section will basically keep track of the actions of your device. It will state the time and action that was performed at that time.



```
15:01:47 --> Power status: Off
17:19:00 --> Power status: On
17:19:05 --> Power status: Off
17:20:00 --> Power status: On
17:20:07 --> Power status: Off
17:20:13 --> Power status: On
10:52:08 --> Power status: Off
Set Time = 0 Sec. --> Power Status O
13:52:07 --> Power status: Off
Set Time = 0 Sec. --> Power Status O
13:52:15 --> Power status: On
Set Time = 0 Sec. --> Power Status O
13:52:23 --> Power status: Off
Set Time = 0 Sec. --> Power Status O
13:52:32 --> Power status: On
Set Time = 0 Sec. --> Power Status O
13:52:40 --> Power status: Off
Set Time = 0 Sec. --> Power Status O
13:52:48 --> Power status: On
Set Time = 0 Sec. --> Power Status O
13:52:56 --> Power status: Off
Set Time = 0 Sec. --> Power Status O
13:53:04 --> Power status: On
Set Time = 2 Sec. --> Power Status O
```

Clear Logs

The clear logs button will clear the logs section of the software. Simply just click on the Clear Logs button.



Update Software

When there is an update for the device software, the update button will become activated. Simply click on the update button and the software will automatically update itself.

Controlling Power Remotely

Using Mac

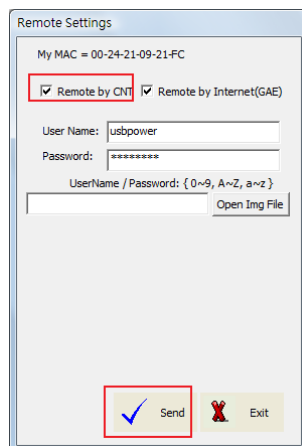
With CNT technology connecting to your device without any type of port forwarding has become easy. When you select this option to control the device using Mac you will be required to use this following program:

- IP Power Center

With IP Power center you can connect to your device from any networked location. By searching for the name of your device you can easily find the device in the network and control it from another computer.

To do this, follow these following steps:

- 1.) First make sure that remote control portion on the USB Power Software is set correctly.



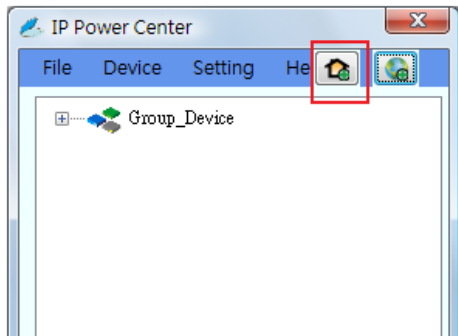
Make sure to use a User name and Password that is distinct to your device

In this case:

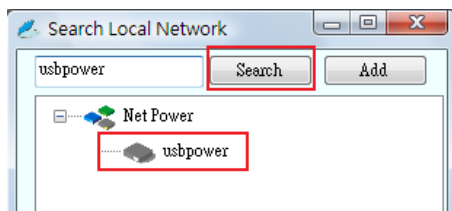
Username is: usbpower

Password is: 12345678

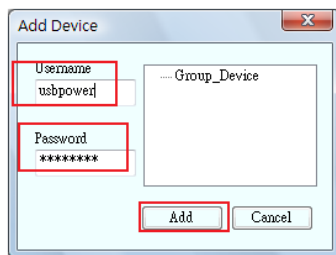
- 2.) Then open up IP Power Center on a computer that is in the same network and click on search local network.



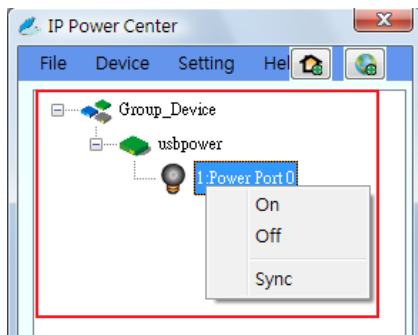
- 3.) Type the username of your device and click the search button. Then your USB Power will appear. Double click on the device name and a login window will open



- 4.) Type in the correct the username and password and click the add button to add to IP Power Center



- 5.) Then expand the group device section and you will find your device there. Right click on the device and select the command of choice.

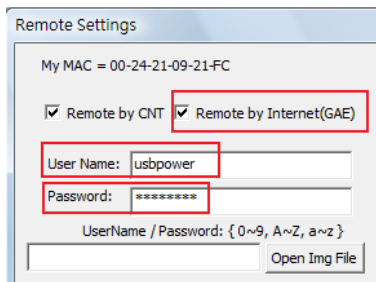


Using GAE

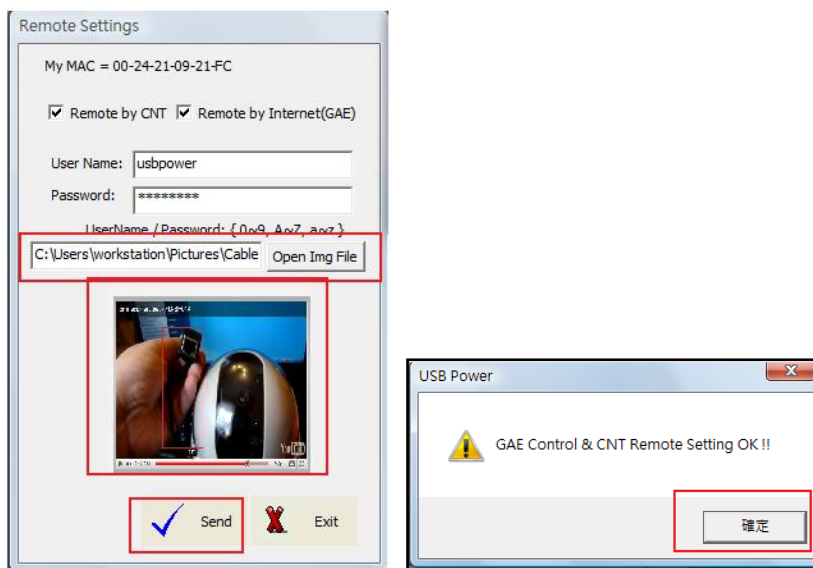
GAE adds a new way to remotely control the USB Net Power. With the power google cloud computing, this GAE functionality allows you to control the USB Net Power from any remote location with internet.

To use this functionality simply follow the following steps:

- 1.) Setup the USB Net Power to accept GAE and hit the send button.



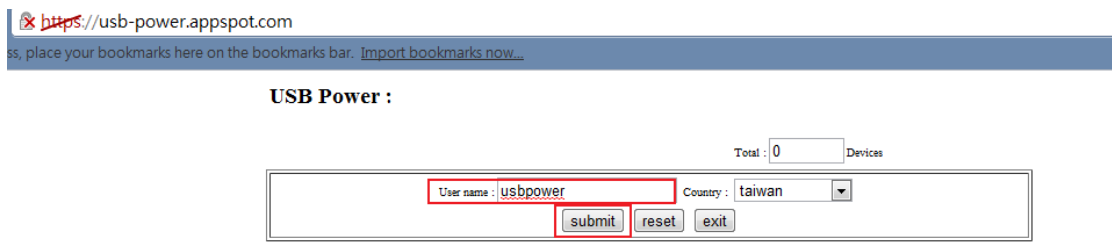
- 2.) Then after you have sent the login information you can upload an image so that your device is easy to find. Simply click on open img file and browse for a picture then hit the send button again when finished.



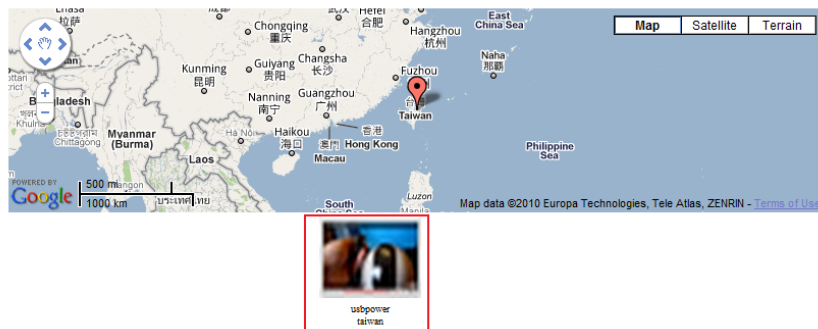
- 3.) Then type in the following link into any web browser. <http://usb-power.appspot.com>



4.) In the link provide type in the user name of your device and click the search button.



5.) Click on your device and a login page will appear to connect to your device.

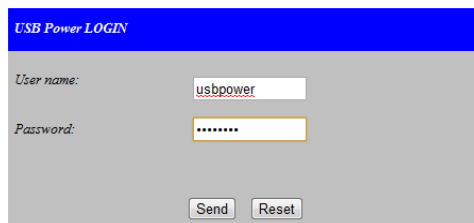


6.) Then type in the username and login password for your device and press the send button.

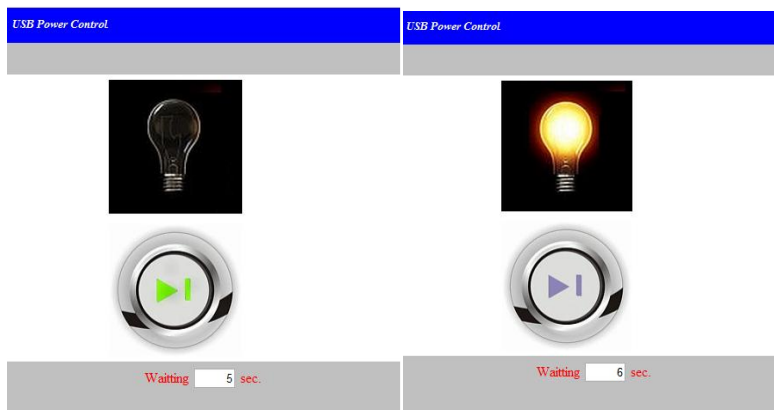
By default:

Login: usbpower

Password: 12345678



7.) Once you are connect to your device you can now turn on or turn off the device via a remote location.



FAQ

FAQ

1.) Question: How come the relay is not working on the device?

Answer: There could be numerous reasons why the relay is working incorrectly. Check the plug to make sure it is plugged in correctly. If not you may need to check the fuse, make sure the device is unplugged before checking the fuse for your safety.

2.) Question: How can I change the fuse on the device?

Answer: Please visit page 7 on the manual to learn how to change the fuse on the USB Net Power

3.) Question: Where can I download the software for the device?

Answer: The necessary software can either be given to you by your local distributor or downloaded from our website at: www.Aviosys.com

Customer Feedback

Your Feedback is definitely important for us to continue providing the great quality products and service that Aviosys has to offer. We definitely would like to know what you think about our products and how we can we can make your Aviosys experience even better.

Please email us at our service department at Service@Aviosys.com or visit customer feedback form at:

<http://spreadsheets.google.com/viewform?hl=en&formkey=dFFudmRyR2phd1ViNVVvaGV4V0pVNHc6MA..#gid=0>

We are happy to serve you to the best of our ability and to provide an ongoing positive experience with Aviosys. Thank you for your support.